

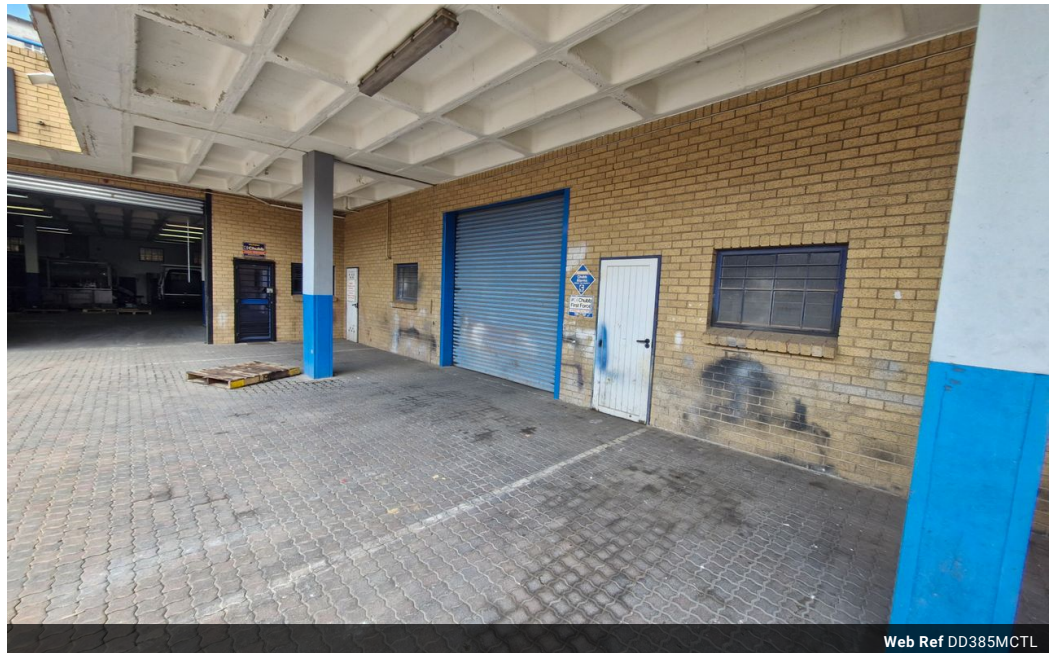


Dane Davids
 0844782022
 dane@newpointproperty.co.za

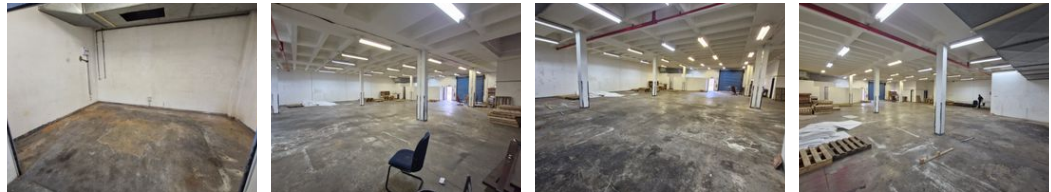
Contact Head Office

010 0354431

Office 40A
 Eden Meadows Complex
 1 Van Riebeeck Avenue
 Greenstone
 1609



Web Ref DD385MCTL



R24,700 pm

Gross Monthly Rental R24,700 Excl. VAT
Monthly Rates R1 Excl. VAT

Monthly Levy R1 Excl. VAT

0 0

industrial mini unit warehouse To Let Wynberg Motorcity

This mini-unit warehouse, located in the sought-after Wynberg Motor City, offers an excellent opportunity for businesses looking to establish themselves in a prime commercial hub. The unit features a spacious warehouse with an on-grade roller door, allowing for seamless loading and offloading. A well-designed layout ensures optimal use of space, while ample natural light enhances the working environment. The property benefits from a shared common yard, providing additional maneuverability for trucks and deliveries.

Situated in Wynberg, Sandton, this warehouse enjoys easy access to major highways, including the M1 and N3, ensuring seamless connectivity to key business districts. The park is well-maintained with 24-hour security, offering a secure and professional

Features

Zoning Industrial

Interior

Floor Loading Cap. 10 Tn/m²
 Power 3 Phase Yes
 Power Amps 100

Exterior

Security Yes

Sizes

Floor Size 385m²
 Land Size 5,000m²

