

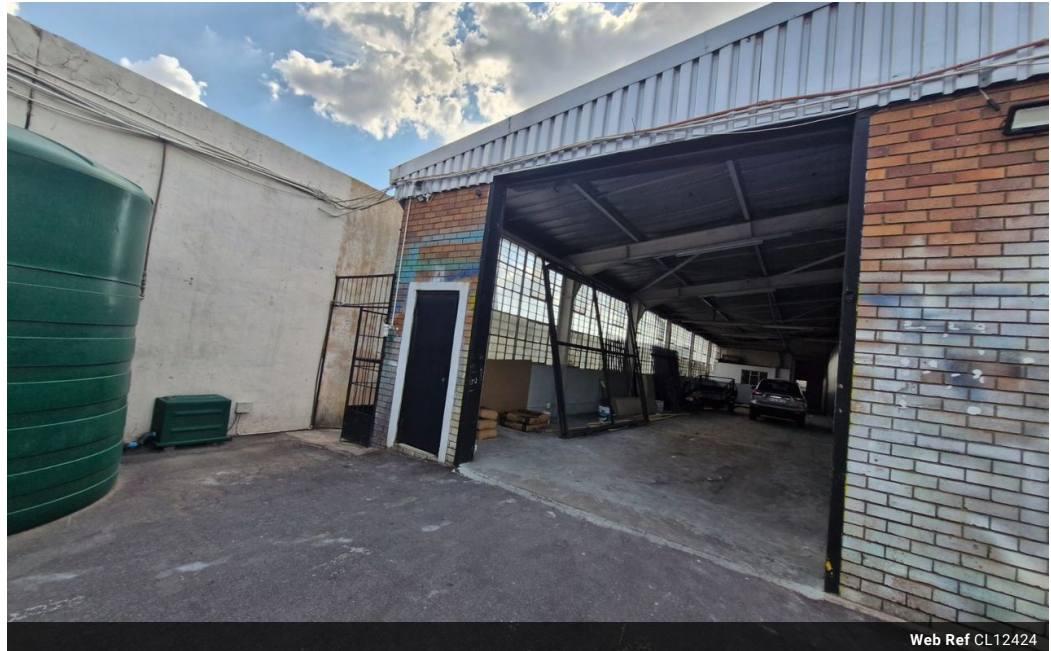


Dane Davids
 0844782022
 dane@newpointproperty.co.za

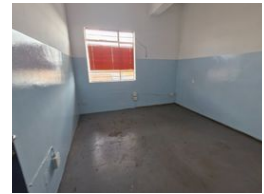
Contact Head Office

010 0354431

Office 40A
 Eden Meadows Complex
 1 Van Riebeeck Avenue
 Greenstone
 1609



Web Ref CL12424



R50 pm

Gross Monthly Rental R50 Excl. VAT



Secure Warehouse in Wynberg, Sandton – Ideal for Logistics & Industrial Use

Discover a well-maintained warehouse in the heart of Wynberg, Sandton, offering 24-hour security within a gated industrial park. This functional space features an on-grade roller door for seamless loading, good height, and ample natural light—creating an efficient and productive environment. With three-phase power, the facility is perfect for a range of industrial and storage needs.

Strategically located with easy access to the M1 highway and major transport routes, this property ensures smooth connectivity to Sandton, Johannesburg, and beyond. If you're looking for a secure, versatile industrial space in a prime location, this warehouse is

Features

Zoning Industrial

Interior

Floor Loading Cap. 10 Tn/m²
 Power 3 Phase Yes
 Power Amps 150

Exterior

Security Yes

Sizes

Floor Size 322m²
 Land Size 3,000m²

