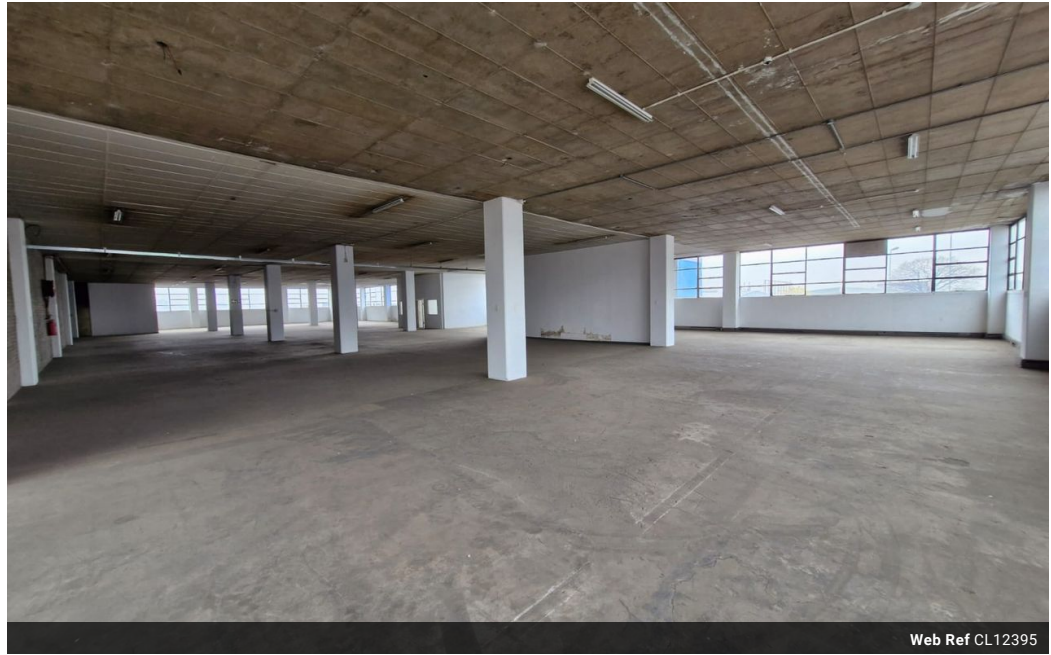




Dane Davids
0844782022
dane@newpointproperty.co.za

Contact Head Office
010 0354431

Office 40A
Eden Meadows Complex
1 Van Riebeeck Avenue
Greenstone
1609



Web Ref CL12395



R56,700 pm

Gross Monthly Rental R56,700 Excl. VAT



Versatile 1,260m² Industrial Warehouse in Wynberg, Sandton – Ideal for Commercial Operations

Located in the bustling Wynberg area of Sandton, this 1,260m² industrial warehouse offers a functional layout for diverse business needs. The facility includes two bathrooms, compact storage areas, and two offices, with the option to expand the office space as required. Rooftop parking provides added convenience for staff and visitors, while the property's established access point enhances security and operational efficiency.

The warehouse features a large roller shutter door for smooth loading and unloading, complemented by ample natural lighting to create a bright, productive environment. With a reliable three-phase power supply, this space is ideal for manufacturing, storage, or

Features

Zoning Industrial

Interior

Floor Loading Cap. 10 Tn/m²
Power 3 Phase Yes
Power Amps 150

Exterior

Security Yes

Sizes

Floor Size 1,260m²
Land Size 5,000m²
Building Height 5m

