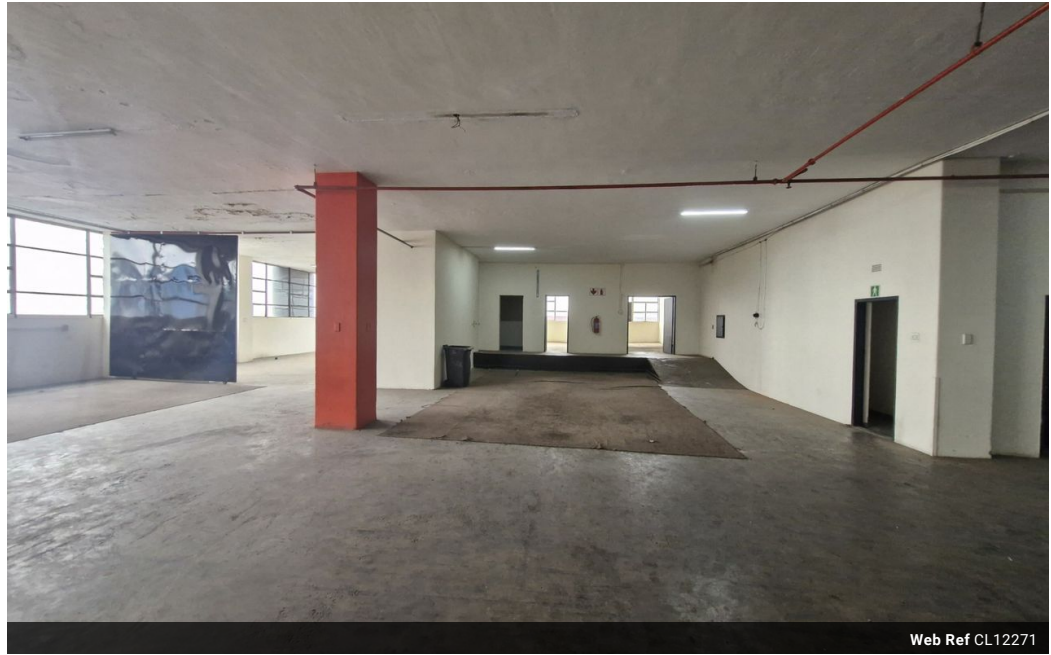




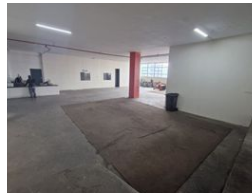
Dane Davids
 0844782022
 dane@newpointproperty.co.za

Contact Head Office
 010 0354431

Office 40A
 Eden Meadows Complex
 1 Van Riebeeck Avenue
 Greenstone
 1609



Web Ref CL12271



R51,300 pm

Gross Monthly Rental R51,300 Excl. VAT

0 0

Prime 1,140m² Multi-Level Warehouse in Wynberg, Sandton

This well-maintained 1,140m² industrial warehouse in Wynberg, Sandton, offers a versatile and efficient workspace for a range of business operations. Featuring an on-grade roller door for seamless loading and unloading, the unit ensures smooth logistical flow. The clean and organized facility provides a professional environment, making it an excellent choice for businesses seeking functionality and reliability.

Security is a top priority, with stringent safety measures in place to protect both assets and personnel. Situated in a secure industrial complex with reputable tenants, the warehouse fosters a collaborative and professional business atmosphere. With convenient access, ample parking, and a strategic location, this property is ideal for businesses looking for a secure and

Features

Zoning Industrial

Interior

Floor Loading Cap. 10 Tn/m²
 Power 3 Phase Yes
 Power Amps 150

Exterior

Security Yes

Sizes

Floor Size 1,140m²
 Land Size 5,000m²
 Building Height 15m

