



Dane Davids
 0844782022
 dane@newpointproperty.co.za

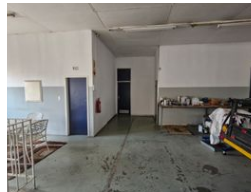
Contact Head Office

010 0354431

Office 40A
 Eden Meadows Complex
 1 Van Riebeeck Avenue
 Greenstone
 1609



Web Ref DD684TL



R34,200 pm

Gross Monthly Rental R34,200 Excl. VAT

0 0

Neat sought after industrial warehouse in Wynberg

This spacious warehouse available for lease in Wynberg is an ideal solution for businesses seeking secure and accessible storage or operational space. Located within a well-maintained and secure industrial park, the property includes two on-grade roller doors, allowing easy loading and unloading for trucks and delivery vehicles. The setup is designed to streamline logistics, making it an excellent fit for warehousing, light manufacturing, or distribution activities.

The warehouse benefits from strong security measures, providing peace of mind for your business operations. Its open floor plan allows for flexible use, enabling tenants to optimize the space for various industrial purposes. Additionally, the property's prime

Features

Zoning Industrial

Interior

Floor Loading Cap. 10 Tn/m²
 Air Conditioning Yes
 Power 3 Phase Yes
 Power Amps 100

Exterior

Security Yes

Sizes

Floor Size 684m²
 Land Size 5,000m²
 Building Height 5m

