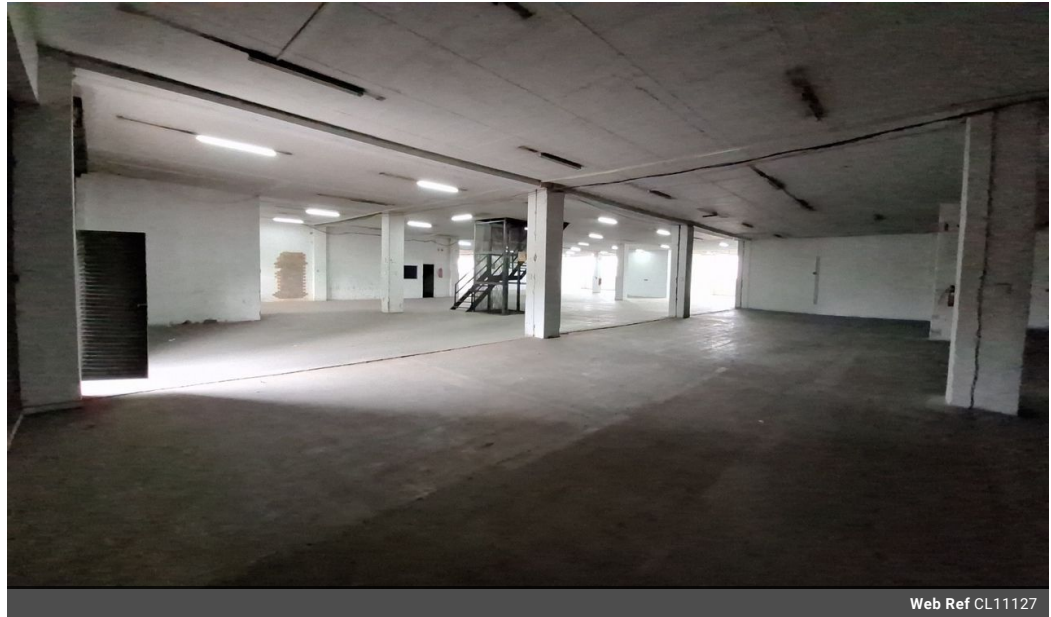




**Dane Davids**  
 0844782022  
 dane@newpointproperty.co.za

Contact Head Office  
 010 0354431

Office 40A  
 Eden Meadows Complex  
 1 Van Riebeeck Avenue  
 Greenstone  
 1609



Web Ref CL11127



R67,500 pm

Gross Monthly Rental R67,500 Excl. VAT

0 0

### 1 500m<sup>2</sup> Industrial warehouse in Wynberg, Sandton

Situated in Wynberg, Sandton, this 1,500m<sup>2</sup> industrial warehouse offers a versatile space suited for a range of commercial activities. The property includes two bathrooms, well-designed office spaces, and a fully equipped kitchen, ensuring a balanced environment for both administrative and operational tasks. Convenient parking bays provide easy access for staff and visitors, contributing to smoother logistics and daily operations.

The warehouse is outfitted with three-phase power and a single roller shutter door, allowing for efficient loading and unloading processes. Ample storage space further enhances the functionality of the facility, making it ideal for businesses seeking a practical and accessible location. With its strategic layout and essential amenities, this warehouse offers an excellent base for

### Features

**Zoning** Industrial

**Interior**

Power 3 Phase Yes

**Exterior**

Security Yes

**Sizes**

Floor Size 1,500m<sup>2</sup>  
 Land Size 1,500m<sup>2</sup>

