



Tyrone Varga
Principal Property Practitioner
Registered with PPRA (FFC 114 321 7)
072 869 3246

tyrone@newpointproperty.co.za

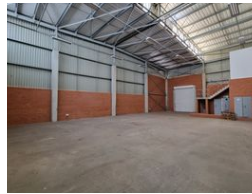
Contact Head Office

010 0354431

Office 40A
Eden Meadows Complex
1 Van Riebeeck Avenue
Greenstone
1609



Web Ref CL12050



R27,176 pm

Gross Monthly Rental R27,176 Excl. VAT
Monthly Rates R4,222 Excl. VAT

Monthly Levy R4,128 Excl. VAT

0 4

Prime Industrial Unit in Edge Logistics Complex – Secure, Accessible, and Versatile

Discover a top-tier industrial unit within the prestigious Edge Logistics complex in Longlake, Sandton—where security, convenience, and functionality come together. This modern facility offers 24-hour security surveillance, providing a safe and efficient environment for your business operations. Perfectly positioned near the N3 highway and Marlboro Road, the unit ensures seamless connectivity to key transport routes, making it ideal for storage, distribution, or light manufacturing. Featuring a large roller door for effortless truck access, impressive height for flexible storage solutions, and excellent natural lighting, this space is designed for operational efficiency. A robust three-phase power supply further enhances its capabilities.

Features

Zoning Industrial

Interior

Power 3 Phase Yes

Exterior

Security Yes
Open Parking Bays 4

Sizes

Floor Size 344m²
Land Size 20,000m²

