



Tyrone Varga
Principal Property Practitioner
Registered with PPRA (FFC 114 321 7)
072 869 3246

tyrone@newpointproperty.co.za

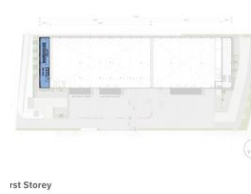
Contact Head Office

010 0354431

Office 40A
Eden Meadows Complex
1 Van Riebeeck Avenue
Greenstone
1609



Web Ref CL10644



R317,520 pm

Gross Monthly Rental R317,520 Excl. VAT Monthly Levy R52,920 Excl. VAT

0 20

3 528m² New development in Longlake, Sandton

Discover an unparalleled opportunity in the vibrant Longlake/Linbro Park district of Sandton—an innovative development poised to transform industrial landscapes. Scheduled for release on August 1, 2024, this property features adaptable dimensions, allowing customization to meet tenants' unique needs. The centerpiece is the warehouse, boasting an impressive height of 15 meters to maximize vertical storage. Natural light floods the workspace, enhancing productivity, while the three-phase power supply supports diverse industrial operations. Accessible through multiple roller doors and loading bays, logistical efficiency is prioritized, further enhanced by the expansive paved yard ideal for container storage, underscoring the property's operational versatility.

Features

Zoning Industrial

Interior		Exterior		Sizes	
Power 3 Phase	Yes	Security	Yes	Floor Size	3,528m ²
Power Amps	200	Open Parking Bays	20	Land Size	8,000m ²

