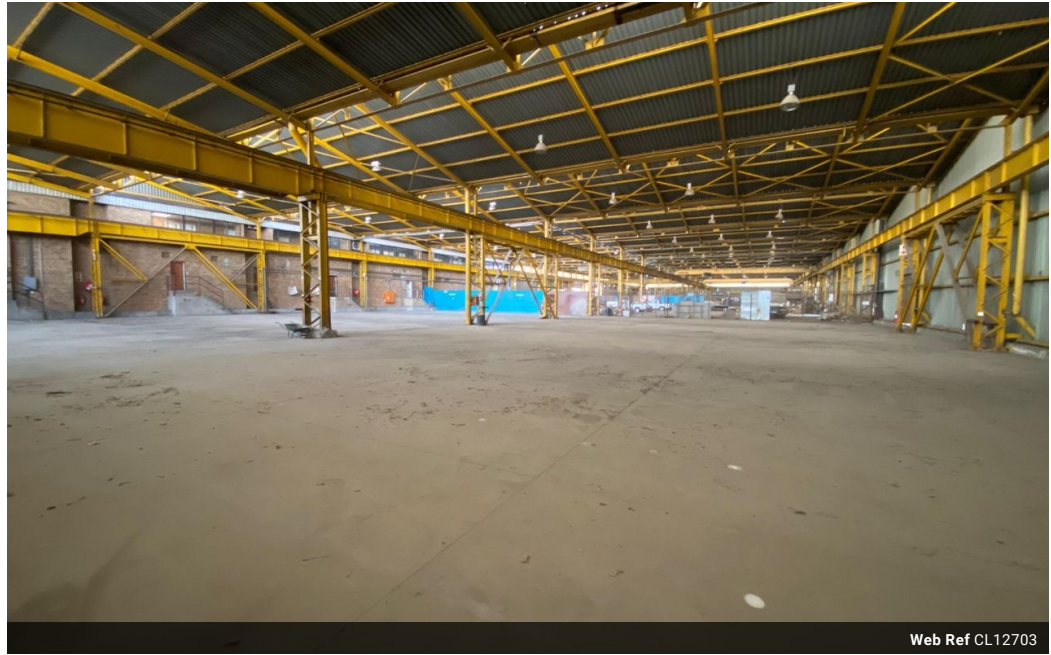




Ryan Van Rensburg
0846482022
ryan@newpointproperty.co.za

Contact Head Office
010 0354431

Office 40A
Eden Meadows Complex
1 Van Riebeeck Avenue
Greenstone
1609



Web Ref CL12703



R50,000 pm

Gross Monthly Rental R50,000 Excl. VAT

0 0

Spacious 2,000m² Warehouse – Ideal for Storage & Logistics

This expansive 2,000m² warehouse is designed for maximum storage efficiency, featuring high ceilings, an open layout, and seamless maneuverability for warehousing and logistics operations. Its well-optimized design ensures smooth workflow and ample capacity, making it a practical solution for businesses requiring large-scale storage.

The property also includes well-appointed office spaces for administrative needs, essential staff ablution facilities, and a dedicated entrance gate with a high roller shutter door for easy loading and unloading. Offered at a competitive rate per square meter, this facility presents an excellent value for businesses seeking a cost-effective, high-functioning warehouse. Contact us today to

Features

Zoning Industrial

Interior		Exterior		Sizes	
Power 3 Phase	Yes	Security	Yes	Floor Size	2,000m ²
				Building Height	8m

