



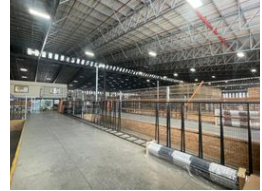
Ryan Van Rensburg
 0846482022
ryan@newpointproperty.co.za

Contact Head Office
 010 0354431

Office 40A
 Eden Meadows Complex
 1 Van Riebeeck Avenue
 Greenstone
 1609



Web Ref RVR14600TLST



R650,000 pm

Gross Monthly Rental R650,000 Excl. VAT

0 0

14600sqm Warehouse TO LET in Stormill

14,600sqm warehouse offers an ideal space for various industrial and commercial operations. The property features a spacious 2,160sqm basement area for additional storage or parking, and a 2,438sqm office area that provides comfortable office space for your team. With high ceilings and a large open floor plan, the warehouse offers ample room for efficient storage, production, and distribution activities.

Equipped with a robust 650 Amp three-phase power supply, the property supports high-demand operations. It also boasts super-link truck access for seamless transportation and logistics, along with convenient loading docks for easy goods handling. Whether you're expanding or relocating, this facility offers the perfect combination of space, power, and access to meet the needs of your

Features

Zoning Industrial

Interior

Power 3 Phase Yes
 Power Amps 650

Exterior

Security Yes

Sizes

Floor Size 14,600m²
 Land Size 16,961m²

