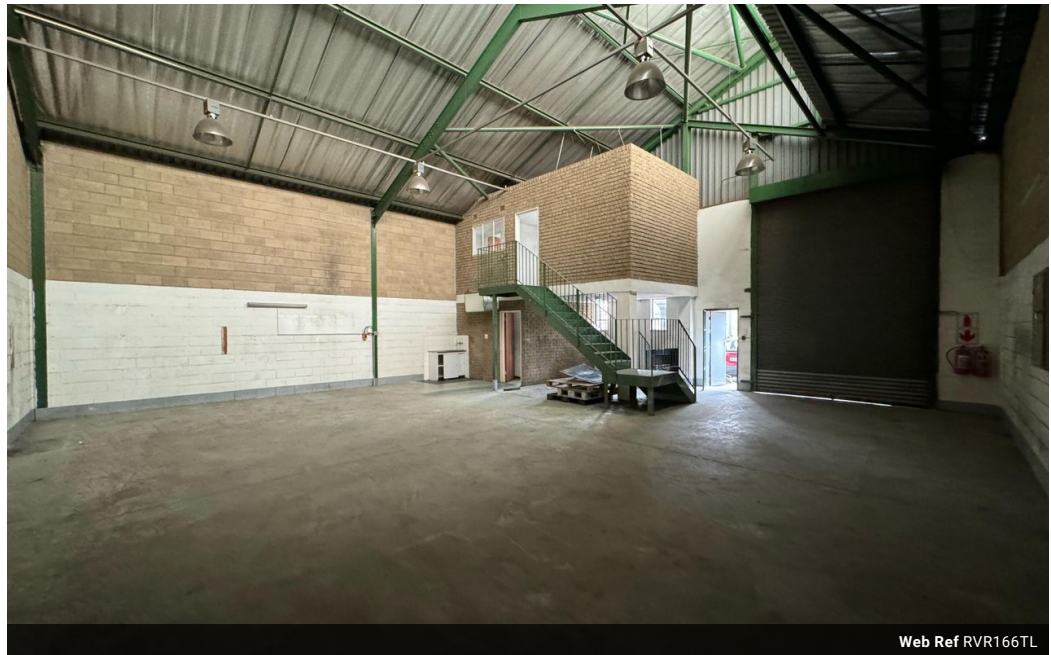




Ryan Van Rensburg
0846482022
ryan@newpointproperty.co.za

Contact Head Office
010 0354431

Office 40A
Eden Meadows Complex
1 Van Riebeeck Avenue
Greenstone
1609



Web Ref RVR166TL



R9,130 pm

Gross Monthly Rental R9,130 Excl. VAT



166sqm Warehouse TO LET in Robertville

166sqm warehouse is located in a secure, access-controlled park with 24/7 security, offering peace of mind for your business operations. The warehouse is equipped with three-phase power, making it ideal for a variety of industrial and commercial uses.

The property also features an office space, perfect for administrative tasks, along with well-maintained bathroom facilities for added convenience. With its secure location, reliable power supply, and functional layout, this warehouse is a fantastic opportunity for businesses in need of space and security.

Easy access to major routes ensures seamless logistics and transport. A perfect solution for growing businesses looking for a

Features

Zoning Industrial

Interior

Floor Loading Cap. 1 Tn/m²
Power 3 Phase Yes

Exterior

Security Yes

Sizes

Floor Size 166m²
Land Size 166m²
Building Height 6m

