



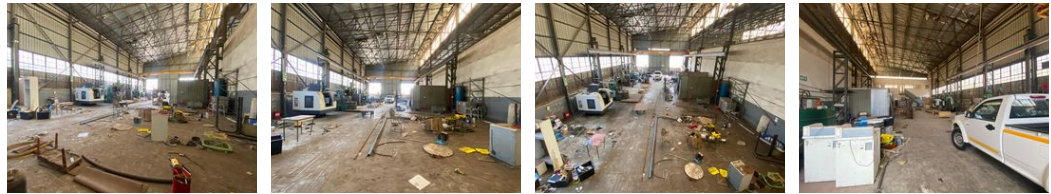
Ryan Van Rensburg
0846482022
ryan@newpointproperty.co.za

Contact Head Office
010 0354431

Office 40A
Eden Meadows Complex
1 Van Riebeeck Avenue
Greenstone
1609



Web Ref CL12656



R29,000 pm

Gross Monthly Rental R29,000 Excl. VAT

0 0

Prime 612m² Industrial Unit in Secure Business Park

This well-designed 612m² industrial unit is located in a premier industrial park, offering a high-volume warehouse with excellent vertical space for machinery, inventory, or specialized equipment. A large roller shutter door allows for smooth truck access, ensuring seamless logistics and workflow.

The open-plan layout provides versatility for various industrial applications, while a powerful three-phase power supply supports heavy-duty operations. Multi-floor office spaces create a professional setting for administrative functions, complemented by well-maintained staff facilities. With its secure location and functional design, this unit is an excellent opportunity for businesses

Features

Zoning Industrial

Interior
Power 3 Phase Yes

Sizes
Floor Size 612m²
Building Height 8m

