



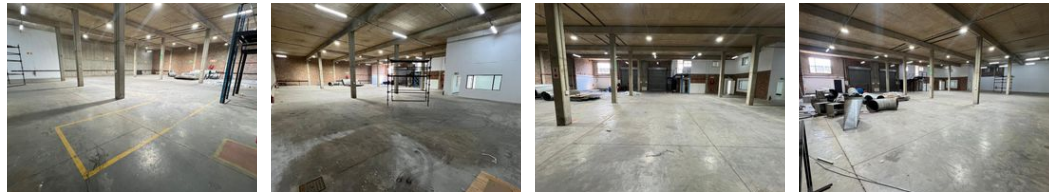
Ethan Willett
 0844752021
 ethan.w@newpointproperty.co.za

Contact Head Office
 010 0354431

Office 40A
 Eden Meadows Complex
 1 Van Riebeeck Avenue
 Greenstone
 1609



Web Ref EWLPTL941A



R70,575 pm

Gross Monthly Rental R70,575 Excl. VAT

0 0

Industrial property to Rent in Laserpark, Roodepoort

This industrial warehouse, available for immediate rent at an asking price of R70,575 plus VAT and utilities, offers a spacious 941sqm layout. The property is well-suited for a variety of business needs, featuring two on-grade roller shutter doors, excellent warehouse floor space, and a high roof, providing ample room for operations. The unit is located within a secure and well-maintained business park in Laserpark, Roodepoort, just off Beyers Naude Drive, ensuring easy accessibility for logistics and staff.

In addition to the warehouse space, the unit boasts a substantial amount of office space both upstairs and on the ground floor. It is also equipped with essential amenities, including four toilets, two showers, and two kitchenettes, ensuring a comfortable and

Features

Zoning Industrial

Interior

Floor Loading Cap. 3 Tn/m²
 Air Conditioning Yes
 Power 3 Phase Yes
 Power Amps 100

Exterior

Security Yes

Sizes

Floor Size 941m²

Extras

24 Hour Access 24 Hour Response

