



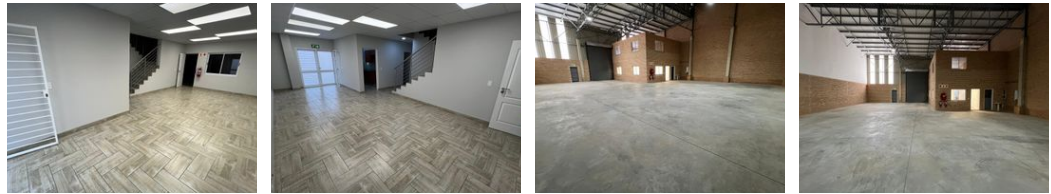
Ethan Willett
 0844752021
 ethan.w@newpointproperty.co.za

Contact Head Office
 010 0354431

Office 40A
 Eden Meadows Complex
 1 Van Riebeeck Avenue
 Greenstone
 1609



Web Ref 424EWLPTL



R28,832 pm

Gross Monthly Rental R28,832 Excl. VAT

0 5

Industrial property to Rent in Laserpark, Roodepoort

This 424sqm industrial warehouse is available for rent in a well-maintained and secure business park in Laserpark, Roodepoort. Priced at R28,832 plus VAT and utilities, the property offers an excellent location just off the main Beyers Naude Drive, providing easy access to key transport routes. The business park benefits from 24-hour security, ensuring a safe environment for operations. The warehouse boasts a large on-grade roller shutter door, providing seamless entry and exit for goods, along with impressive roof height and ample floor space ideal for industrial activities.

In addition to the spacious warehouse area, the unit is equipped with two offices, two toilets, and a kitchenette, offering added

Features

Zoning Industrial

Interior

Floor Loading Cap. 3 Tn/m²
 Power 3 Phase Yes
 Power Amps 80

Exterior

Security Yes
 Open Parking Bays 5

Sizes

Floor Size 424m²

Extras

24 Hour Access 24 Hour Response

