



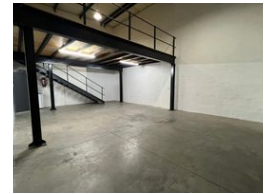
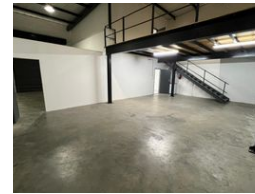
Ethan Willett
 0844752021
 ethan.w@newpointproperty.co.za

Contact Head Office
 010 0354431

Office 40A
 Eden Meadows Complex
 1 Van Riebeeck Avenue
 Greenstone
 1609



Web Ref 220EWTLPP



R20,640 pm

Gross Monthly Rental R20,640 Excl. VAT

0 4

Industrial property to Rent in Laserpark, Roodepoort

This industrial property, located in the secure and well-maintained business park of Laserpark, Roodepoort, offers 220sqm of versatile space available for immediate rental at R20 640 plus VAT and utilities. The property is situated just off Beyers Naude Drive, providing excellent access to major roads. The business park boasts on-site security, ensuring a safe and professional working environment. The warehouse features two on-grade roller shutter doors, high ceilings, and ample space for various operations. A neat mezzanine has been installed to optimize the usable area, providing additional storage or office space.

Inside, the unit includes a reception and office area downstairs, along with another office upstairs, offering a productive

Features

Zoning Industrial

Interior

Floor Loading Cap. 3 Tn/m²
 Air Conditioning Yes
 Power 3 Phase Yes
 Power Amps 60

Exterior

Security Yes
 Open Parking Bays 4

Sizes

Floor Size 220m²

Extras

24 Hour Response

