



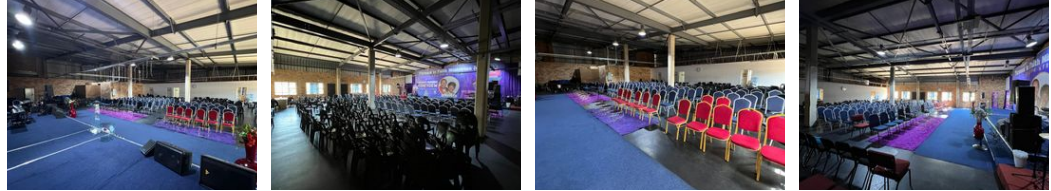
**Ethan Willett**  
 0844752021  
 ethan.w@newpointproperty.co.za

Contact Head Office  
 010 0354431

Office 40A  
 Eden Meadows Complex  
 1 Van Riebeeck Avenue  
 Greenstone  
 1609



Web Ref TL600LPEW



R45,000 pm

Gross Monthly Rental R45,000 Excl. VAT



## Industrial property to Rent in Honeydew, Roodepoort

This spacious 600sqm industrial warehouse is available for rent at an asking price of R45,000 plus VAT and utilities, located in a well-maintained and secure business park in Honeydew, Roodepoort. The park offers 24-hour security, ensuring peace of mind for tenants. The warehouse features an on-grade roller shutter door for easy access, along with a large open floor plan that allows for efficient storage and operations. The roof height is excellent, providing ample vertical space for racking and other storage needs.

In addition to the warehouse space, the unit includes three offices and a boardroom, ideal for administrative work or client meetings. The facility also boasts two bathrooms for staff convenience. The warehouse is well-equipped with 100 amps of 3-

## Features

**Zoning** Industrial

### Interior

Floor Loading Cap. 3 Tn/m<sup>2</sup>  
 Power 3 Phase Yes  
 Power Amps 100

### Exterior

Security Yes

### Sizes

Floor Size 600m<sup>2</sup>

### Extras

24 Hour Access

