



Martin Montgomery
 Candidate Property Practitioner
 Registered with PPRA
 (FFC 121 152 3)
 0818542055

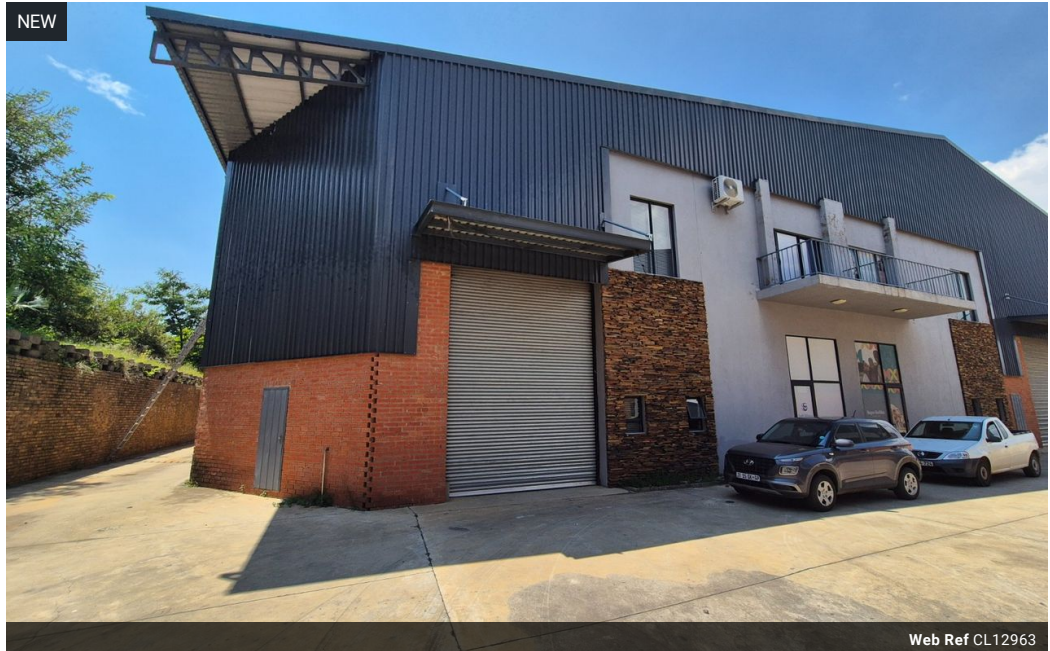
martin@newpointproperty.co.za

Contact Head Office

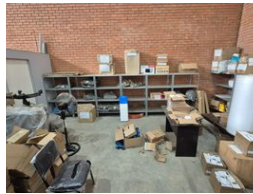
010 0354431

Office 40A
 Eden Meadows Complex
 1 Van Riebeeck Avenue
 Greenstone
 1609

NEW



Web Ref CL12963



R31,155 pm

Gross Monthly Rental R31,155 Excl. VAT

Monthly Levy R558 Excl. VAT

0 6

Modern 465m² Warehouse To Let in Cosmo Business Park – High Power & Prime Access

Secure this brand-new 465m² warehouse in the sought-after Cosmo Business Park, designed for operational efficiency and easy access. The unit features two large on-grade sliding doors on opposite sides, smooth level flooring, excellent eave height, and abundant natural lighting—ideal for light manufacturing, storage, or logistics. A strong 160 amps of 3-phase power ensures you're ready for industrial-scale operations.

Inside, the space includes a tiled reception, open-plan and private offices, kitchenettes, and ablutions tailored for both office and warehouse staff. Located in a fully paved, secure business park with easy truck access, this unit is part of a growing industrial hub

Features

Zoning Industrial

Interior

Power 3 Phase	Yes
Power Amps	80

Exterior

Security	Yes
Open Parking Bays	6

Sizes

Floor Size	465m ²
Land Size	465m ²
Building Height	8m

