



**Ethan Willett**  
 0844752021  
 ethan.w@newpointproperty.co.za

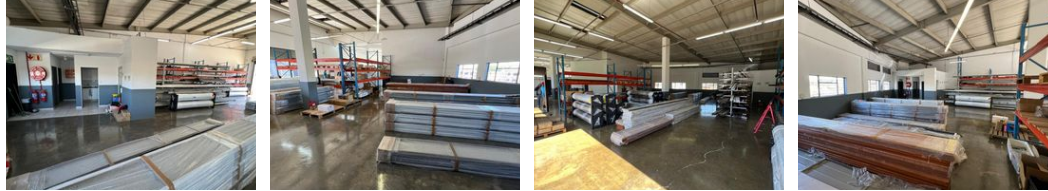
Contact Head Office

010 0354431

Office 40A  
 Eden Meadows Complex  
 1 Van Riebeeck Avenue  
 Greenstone  
 1609



Web Ref CL12566



R38,540 pm

Gross Monthly Rental R38,540 Excl. VAT



### 385m<sup>2</sup> Warehouse with Showroom in Prime Strijdompark Location

Position your business in this well-maintained 385m<sup>2</sup> warehouse unit, available for rent at R38,540 plus VAT and utilities. Located in a secure business park in Strijdompark, Randburg, this property enjoys high visibility and easy access off the N1 highway and Malibongwe Drive, making it an ideal choice for businesses seeking both convenience and exposure.

The unit features a roller shutter door for seamless loading and deliveries, good roof height for ample storage, and a neat showroom area, perfect for client-facing operations. Additional amenities include two toilets and a kitchenette, ensuring a comfortable and functional workspace. Don't miss out on this strategic business opportunity—contact us today to schedule a

### Features

**Zoning** Industrial

#### Interior

Floor Loading Cap. 1 Tn/m<sup>2</sup>  
 Power 3 Phase Yes  
 Power Amps 60

#### Exterior

Security Yes

#### Sizes

Floor Size 385m<sup>2</sup>

#### Extras

24 Hour Access Toilet

