



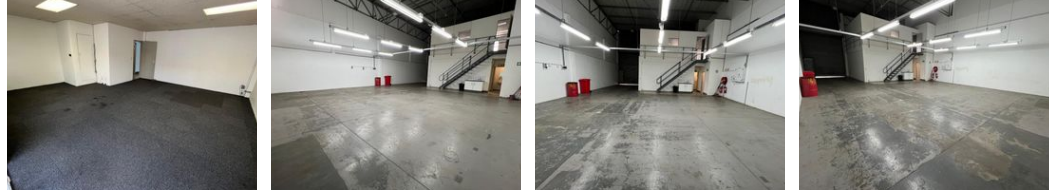
Ethan Willett
 0844752021
 ethan.w@newpointproperty.co.za

Contact Head Office
 010 0354431

Office 40A
 Eden Meadows Complex
 1 Van Riebeeck Avenue
 Greenstone
 1609



Web Ref 273FDTLEW



R19,110 pm

Gross Monthly Rental R19,110 Excl. VAT

0 0

Industrial Property to Rent in Strijdompark, Randburg

This industrial warehouse, located in a well-maintained and secure business park just off Malibongwe Drive in Strijdompark, Randburg, offers a spacious 273sqm unit available for immediate rental. Priced at R19 110 per month, plus VAT and utilities, it provides a great opportunity for businesses looking for a functional and secure space. The warehouse features a high on-grade roller shutter door for easy access, along with a generous floor area and good warehouse roof height to accommodate a variety of industrial activities.

The unit includes three offices, ideal for administrative tasks, two bathrooms, a shower, and a kitchenette for added convenience. In addition, it is equipped with a 3-phase power supply, catering to businesses with higher electrical demands. Its strategic location

Features

Zoning Industrial

Interior

Floor Loading Cap. 3 Tn/m²
 Power 3 Phase Yes
 Power Amps 100

Exterior

Security Yes

Sizes

Floor Size 273m²

Extras

24 Hour Access 24 Hour Response

