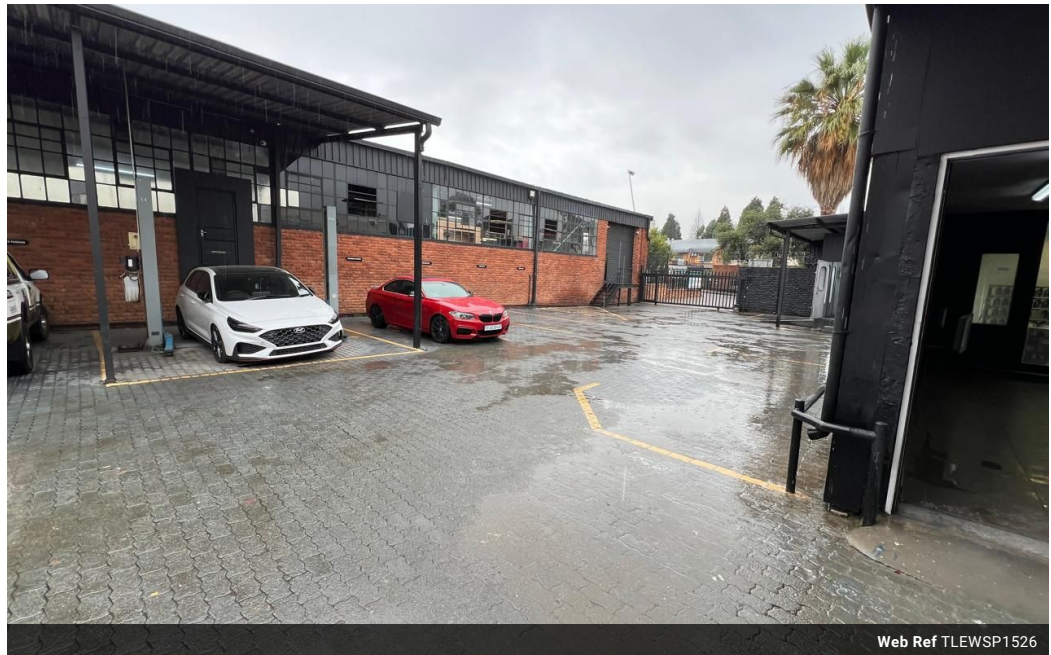




**Ethan Willett**  
 0844752021  
[ethan.w@newpointproperty.co.za](mailto:ethan.w@newpointproperty.co.za)

Contact Head Office  
 010 0354431

Office 40A  
 Eden Meadows Complex  
 1 Van Riebeeck Avenue  
 Greenstone  
 1609



Web Ref TLEWSP1526



R63,120 pm

Gross Monthly Rental R63,120 Excl. VAT

0 0

### Industrial Property to Rent in Strijdompark, Randburg

This spacious 1052sqm free-standing industrial warehouse, available for rent at R63 120 plus VAT and utilities, is ideally located in Strijdompark, Randburg, just off the main Malibongwe Drive. The property boasts excellent accessibility with three on-grade roller shutter doors and two separate entrances, ensuring smooth traffic flow and easy access for deliveries and operations. The warehouse itself is generously sized, featuring a high roof clearance that provides ample space for storage or manufacturing needs.

In addition to the expansive warehouse area, the property offers ample office space, including kitchenettes and office bathrooms, designed for maximum convenience. Separate warehouse bathrooms are also available for staff. Equipped with 3-phase power,

### Features

**Zoning** Industrial

**Interior**

Floor Loading Cap. 3 Tn/m<sup>2</sup>  
 Power 3 Phase Yes  
 Power Amps 150

**Sizes**

Floor Size 1,052m<sup>2</sup>

**Extras**

24 Hour Access 24 Hour Response

