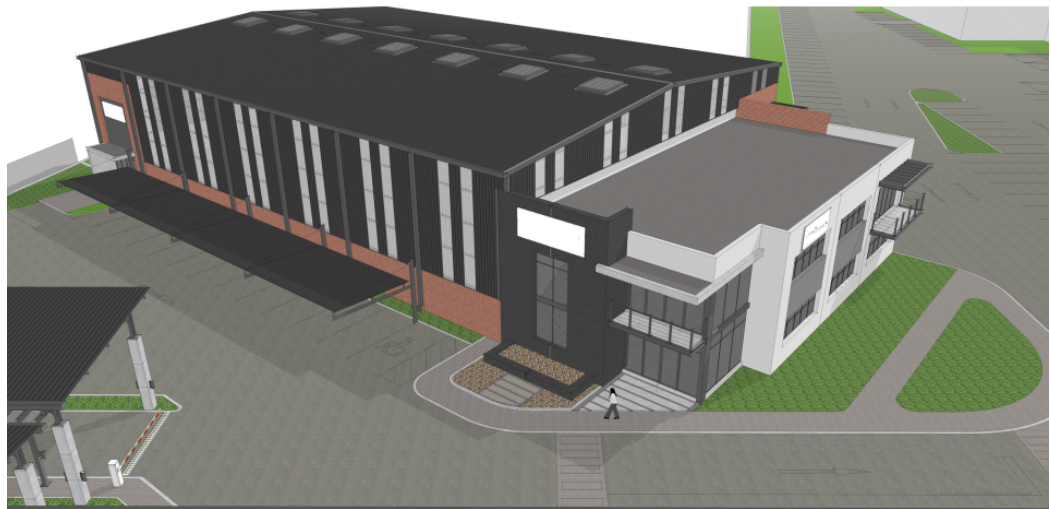




Ethan Willett
 0844752021
 ethan.w@newpointproperty.co.za

Contact Head Office
 010 0354431

Office 40A
 Eden Meadows Complex
 1 Van Riebeeck Avenue
 Greenstone
 1609



Web Ref CL10037



R135,755 pm

Gross Monthly Rental R135,755 Excl. VAT

0 0

1 810m² Neat and Secure Warehouse in Randburg

Explore a newly minted unit in the burgeoning Westridge development, seamlessly merging innovation with convenience. Nestled within this coveted locale, these units epitomize efficiency and sustainability with features like solar power, a dependable water source, and robust security measures, ensuring a harmonious blend of modernity and eco-consciousness.

Positioned strategically near the N1 Highway, these units offer effortless access to pivotal locations, rendering them an optimal choice for businesses seeking convenience. Designed to accommodate diverse needs, they provide businesses with a flexible and

Features

Building Name	Unit 1 Westridge Industrial Park				
Zoning	Industrial				
Interior		Exterior		Sizes	
Floor Loading Cap.	10 Tn/m ²	Security	Yes	Floor Size	1,810m ²
				Land Size	1,810m ²

