



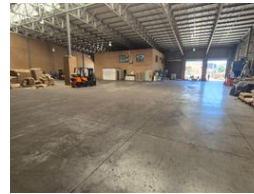
Martin Montgomery
 Candidate Property Practitioner
 Registered with PPRA (FFC 121 152 3)
 0818542055
martin@newpointproperty.co.za

Contact Head Office
 010 0354431

Office 40A
 Eden Meadows Complex
 1 Van Riebeeck Avenue
 Greenstone
 1609



Web Ref MM2654U1CPNR



R207,011 pm

Gross Monthly Rental R207,011 Excl. VAT Monthly Levy R1,158 Excl. VAT

8 20

2655m² Warehouse To Let in North Riding

This exceptional 2,655m² warehouse, situated on a 3,900m² stand in North Riding, Randburg, presents a rare opportunity for businesses seeking a well-equipped industrial facility. Designed for efficiency and functionality, the property includes a modern office component spread across two levels, featuring a showroom, training room, open-plan offices, an archive room, multiple kitchenettes, a boardroom, and well-appointed restrooms—providing a professional and productive workspace.

The 2,030m² warehouse is built to support seamless operations, offering smooth epoxied flooring, high eaves, and ample natural light. With a robust 150-amp three-phase power supply, it is equipped with three high roller shutter doors—two with dock levelers

Features

Zoning Industrial

Interior

Air Conditioning	Yes
Power 3 Phase	Yes
Power Amps	150

Exterior

Security	Yes
Covered Parking Bays	8
Open Parking Bays	20

Sizes

Floor Size	2,655m ²
Land Size	3,959m ²

