



Martin Montgomery
 Candidate Property Practitioner
 Registered with PPRA
 (FFC 121 152 3)
 0818542055

martin@newpointproperty.co.za

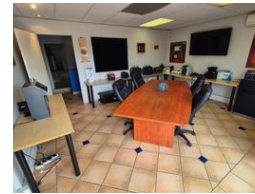
Contact Head Office

010 0354431

Office 40A
 Eden Meadows Complex
 1 Van Riebeeck Avenue
 Greenstone
 1609



Web Ref MM410TLU2CMNR



R31,000 pm

Gross Monthly Rental R31,000 Excl. VAT

0 0

410m² Mini Warehouse To Let in Northlands Business Park

A 410m² mini warehouse is available to let in the secure and well-maintained Northlands Business Park. This very neat building features a modern office component, providing a professional workspace within the industrial setting. The warehouse is equipped with 3-phase power, ensuring efficient operations for various business needs. Access is convenient with an on-grade high roller shutter door, allowing for easy loading and unloading. Additionally, the property includes staff ablutions, enhancing convenience for employees. Situated in a sought-after industrial park with controlled access, this space is ideal for businesses looking for a

Features

Zoning Industrial

Interior
 Power 3 Phase Yes
 Power Amps 100

Exterior
 Security Yes

Sizes
 Floor Size 410m²
 Land Size 410m²
 Building Height 8m

