



**Martin Montgomery**

Candidate Property Practitioner  
Registered with PPRA  
(FFC 121 152 3)

0818542055

[martin@newpointproperty.co.za](mailto:martin@newpointproperty.co.za)

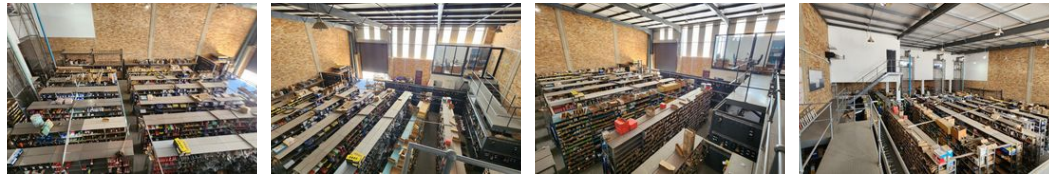
Contact Head Office

010 0354431

Office 40A  
Eden Meadows Complex  
1 Van Riebeeck Avenue  
Greenstone  
1609



Web Ref CL11643



R63,342 pm

Gross Monthly Rental R63,342 Excl. VAT

0 8

782m<sup>2</sup> Warehouse in North Riding, Randburg

Position your business for maximum visibility with this exceptional 782m<sup>2</sup> warehouse located in the bustling Northlands Retail Park. Boasting prominent frontage onto Malibongwe Drive, a major thoroughfare in the area, this property offers unparalleled exposure and brand recognition. The unit features a pristine double-volume office component, designed to provide a professional and productive workspace. With high ceilings and generous height to the eaves, the warehouse ensures ample vertical storage space, making it ideal for efficient operations. Equipped with reliable three-phase power, it's well-suited for running a variety of industrial machinery and equipment.

Access is seamless with an on-grade high roller shutter door, complemented by smooth, level flooring for efficient inventory

Features

**Zoning** Industrial

**Interior**  
Power 3 Phase Yes  
Power Amps 80

**Exterior**  
Open Parking Bays 8

**Sizes**  
Floor Size 782m<sup>2</sup>  
Land Size 782m<sup>2</sup>  
Building Height 10m

