



Martin Montgomery
 Candidate Property Practitioner
 Registered with PPRA
 (FFC 121 152 3)
 0818542055

martin@newpointproperty.co.za

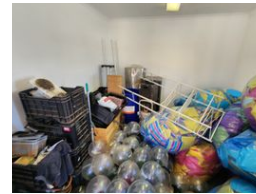
Contact Head Office

010 0354431

Office 40A
 Eden Meadows Complex
 1 Van Riebeeck Avenue
 Greenstone
 1609



Web Ref MM196U3KS



R10,780 pm

Gross Monthly Rental R10,780 Excl. VAT

Monthly Levy R1,430 Excl. VAT

0 4

196m² Warehouse To Let in a Secure Park in Kya Sands

196m² Warehouse To Let in a highly secure park located in the Kya Sands area. This spacious unit boasts a large roller shutter door for easy access and efficient loading/unloading. Benefit from the advantage of 3-phase power supply. The ground floor features a cozy reception area with a bathroom, while upstairs, you'll find two offices and an additional bathroom.

The warehouse floor offers a smooth surface, perfect for seamless operations, and the generous height ensures ample vertical storage space. Not to mention, the convenience of staff ablutions equipped with showers. Don't miss out on this incredible space!

Features

Zoning Industrial

Interior

Power 3 Phase Yes
 Power Amps 80

Exterior

Security Yes
 Open Parking Bays 4

Sizes

Floor Size 196m²
 Land Size 10,000m²
 Building Height 8m

