



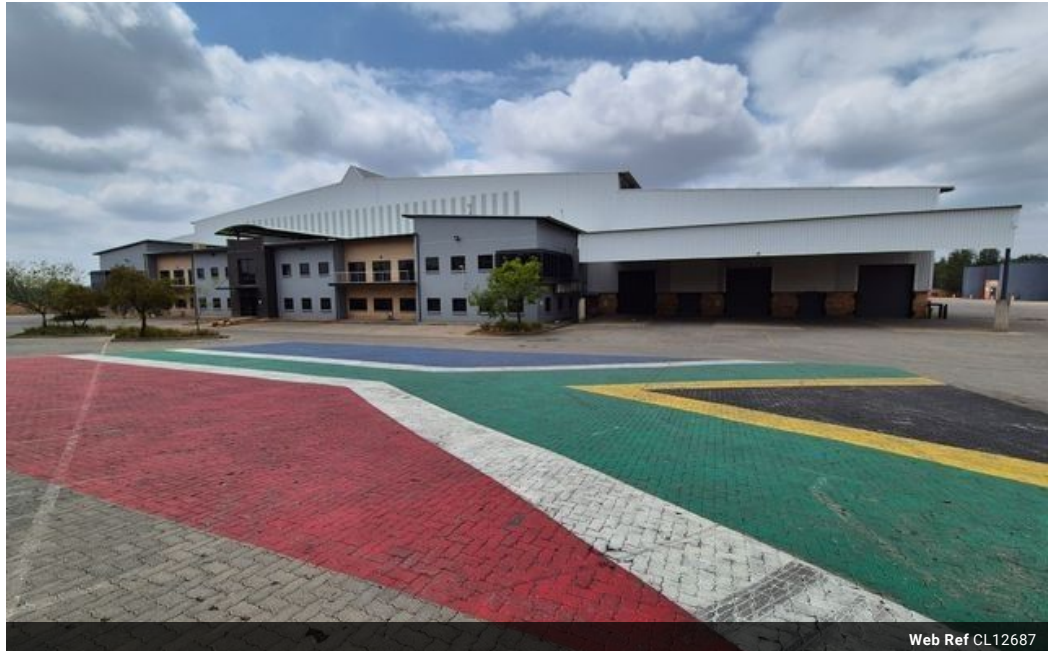
**Martin Montgomery**  
 Candidate Property Practitioner  
 Registered with PPRA (FFC 121 152 3)  
 0818542055

[martin@newpointproperty.co.za](mailto:martin@newpointproperty.co.za)

Contact Head Office

010 0354431

Office 40A  
 Eden Meadows Complex  
 1 Van Riebeeck Avenue  
 Greenstone  
 1609



Web Ref CL12687



R1,170,520 pm

Gross Monthly Rental R1,170,520 Excl. VAT

30 50

## 22,510m<sup>2</sup> High-Spec Distribution Center in Kya Sands

This expansive 22,510m<sup>2</sup> distribution center in Kya Sands is a prime opportunity for large-scale logistics and warehousing operations. Strategically located with seamless access to major highways and transport hubs, the facility is designed for efficiency and flexibility. It features multiple loading bays, high ceilings for maximum storage capacity, ample parking, and modern office spaces to support smooth business operations.

With a robust power supply, an efficient dock system, and advanced fire safety and security measures, this property is built to handle high-volume distribution needs. Whether you're looking to lease or purchase, this premier industrial space offers top-tier

### Features

**Zoning** Industrial

#### Interior

Air Conditioning	Yes
Power 3 Phase	Yes
Power Amps	1400

#### Exterior

Covered Parking Bays	30
Open Parking Bays	50

#### Sizes

Floor Size	22,510m <sup>2</sup>
------------	----------------------

