



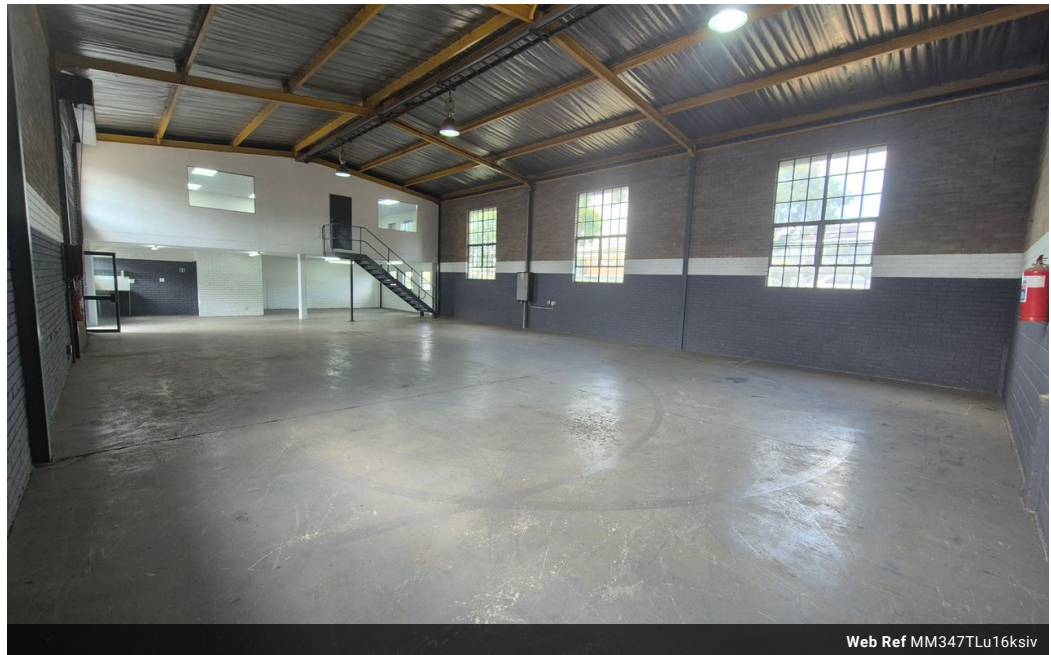
Martin Montgomery
 Candidate Property Practitioner
 Registered with PPRA
 (FFC 121 152 3)
 0818542055

martin@newpointproperty.co.za

Contact Head Office

010 0354431

Office 40A
 Eden Meadows Complex
 1 Van Riebeeck Avenue
 Greenstone
 1609



Web Ref MM347TLu16ksiv



R16,644 pm

Gross Monthly Rental R16,644 Excl. VAT

0 4

347m² Warehouse in a secure Park within Kya Sands, Randburg

This well-maintained 567m² warehouse is now available to let in the sought-after Kya Sands industrial node. The facility features a large on-grade roller shutter door for easy access, smooth level flooring, good height to the eaves, and ample natural lighting. Equipped with three-phase power, staff ablutions, and a changing room, the warehouse is designed for efficiency. The secure industrial park also allows Superlink truck access, ensuring seamless logistics for your business.

The office component is neat and freshly painted, offering multiple office spaces of varying sizes, a kitchenette, and separate male and female bathrooms. Industrial Village Kya Sands is a secure, 24-hour access-controlled park, strategically located near the N1

Features

Zoning Industrial

Exterior
 Open Parking Bays 4

Sizes
 Floor Size 347m²
 Land Size 10,000m²
 Building Height 8m

