



**Martin Montgomery**  
 Candidate Property Practitioner  
 Registered with PPRA  
 (FFC 121 152 3)  
 0818542055

[martin@newpointproperty.co.za](mailto:martin@newpointproperty.co.za)

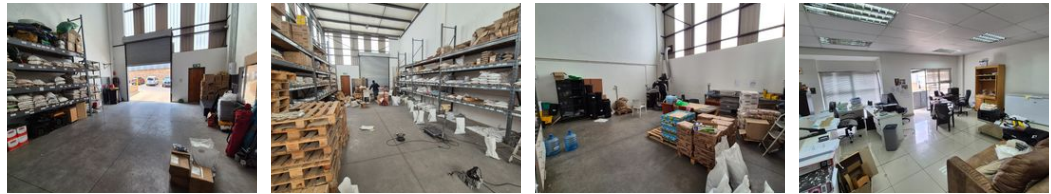
Contact Head Office

010 0354431

Office 40A  
 Eden Meadows Complex  
 1 Van Riebeeck Avenue  
 Greenstone  
 1609



Web Ref CL12239



R24,548 pm

Gross Monthly Rental R24,548 Excl. VAT Monthly Levy R1,805 Excl. VAT

0 0

### Functional & Secure 361m<sup>2</sup> Industrial Unit – Ready for Your Business!

This versatile 361m<sup>2</sup> industrial unit is available for rent at R24,548 per month (excl. VAT & utilities), offering an ideal space for light manufacturing, storage, or logistics. The facility includes a ground-floor reception or office with a restroom, plus an open-plan first-floor office with a private bathroom and kitchenette. A cross-docking layout with two on-grade roller doors ensures smooth loading and unloading for efficient operations.

This unit is designed for productivity and is equipped with 3-phase power and a 60-amp supply. It is situated in a secure industrial park with 24-hour access control, providing a safe and strategic location for your business. Available with just one month's notice.

### Features

**Zoning** Industrial

**Interior**

Power 3 Phase Yes  
 Power Amps 100

**Sizes**

Floor Size 361m<sup>2</sup>  
 Land Size 361m<sup>2</sup>

