



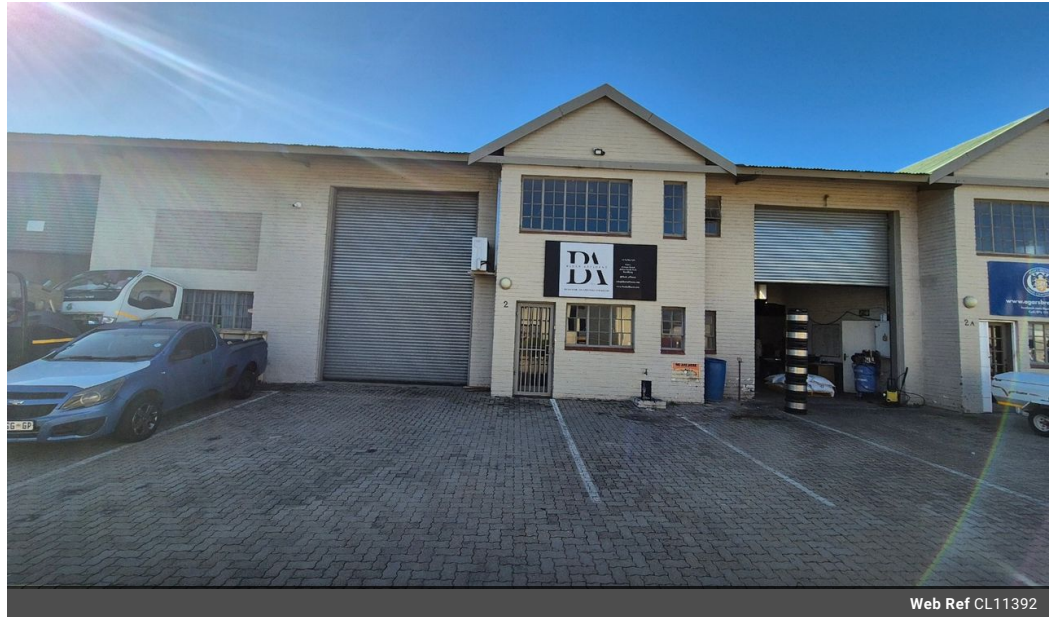
**Martin Montgomery**  
 Candidate Property Practitioner  
 Registered with PPRA  
 (FFC 121 152 3)  
 0818542055

[martin@newpointproperty.co.za](mailto:martin@newpointproperty.co.za)

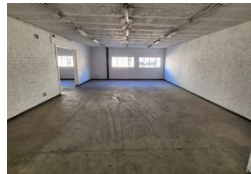
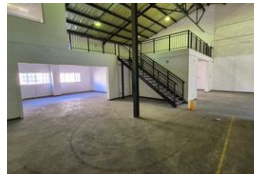
Contact Head Office

010 0354431

Office 40A  
 Eden Meadows Complex  
 1 Van Riebeeck Avenue  
 Greenstone  
 1609



Web Ref CL11392



R25,391 pm

Gross Monthly Rental R25,391 Excl. VAT

Monthly Levy R1,055 Excl. VAT

6 6

## 459m<sup>2</sup> Warehouse in a secure Park within Kya Sands, Randburg

Discover the ideal workspace in this pristine 459m<sup>2</sup> warehouse, now available for lease in the esteemed Kya Sands Park. This immaculate unit features a small yet functional office component, providing essential space for your business operations. Step into a meticulously clean and organized warehouse area, perfect for storage and a variety of industrial activities. The high roller shutter door ensures effortless loading and unloading, streamlining your inventory management.

Nestled in a highly secure area, this unit offers peace of mind for your operations and boasts modern amenities, including three-phase power and high roofs, which optimize operational efficiency while providing ample vertical storage space. Don't miss this

## Features

**Zoning** Industrial

### Interior

Power 3 Phase Yes  
 Power Amps 100

### Exterior

Security Yes  
 Covered Parking Bays 6  
 Open Parking Bays 6

### Sizes

Floor Size 459m<sup>2</sup>  
 Land Size 20,000m<sup>2</sup>  
 Building Height 10m

