



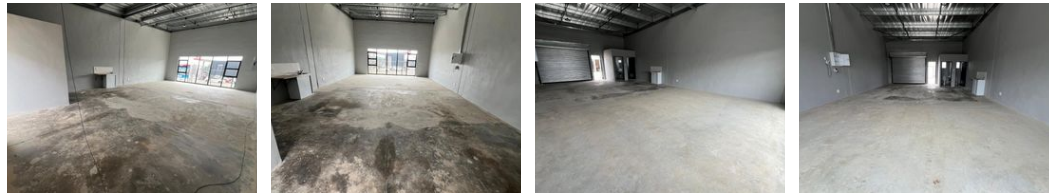
Ethan Willett
 0844752021
 ethan.w@newpointproperty.co.za

Contact Head Office
 010 0354431

Office 40A
 Eden Meadows Complex
 1 Van Riebeeck Avenue
 Greenstone
 1609



Web Ref 95EWFDTLA2



R11,900 pm

Gross Monthly Rental R11,900 Excl. VAT

0 3

Industrial Property to Rent in Ferndale, Randburg

This industrial mini unit, spanning 95sqm, is available for immediate rental at R11,900 per month plus VAT and utilities. Situated in a well-maintained and secure business park in Ferndale, Randburg, the unit offers easy access just off Malibongwe Drive, one of the main roads in the area. The unit features a spacious open floor plan, equipped with an on-grade roller shutter door, providing smooth access for deliveries and logistics. With a high warehouse roof and ample floor space, it offers great flexibility for a variety of industrial or storage needs.

In addition to the generous floor area, the unit includes practical amenities such as two toilets and a kitchen basin setup for convenience. The property boasts excellent visibility, located directly across from a busy petrol station, ensuring high exposure for

Features

Zoning Industrial

Interior

Floor Loading Cap. 3 Tn/m²
 Power 3 Phase Yes
 Power Amps 60

Exterior

Security Yes
 Open Parking Bays 3

Sizes

Floor Size 95m²

Extras

24 Hour Access 24 Hour Response

