



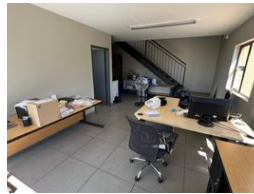
**Ethan Willett**  
 0844752021  
 ethan.w@newpointproperty.co.za

Contact Head Office  
 010 0354431

Office 40A  
 Eden Meadows Complex  
 1 Van Riebeeck Avenue  
 Greenstone  
 1609



Web Ref TL301EWFD



R22,575 pm

Gross Monthly Rental R22,575 Excl. VAT

0 4

## Industrial Property to Rent in Ferndale, Randburg

This 301 square meter industrial warehouse available for rent in Ferndale, Randburg, offers a prime opportunity for businesses seeking a secure and functional workspace. Nestled within a well-maintained and secure industrial park, the unit benefits from comprehensive security measures including perimeter fencing, electric fencing, 24-hour security personnel, and surveillance cameras ensuring round-the-clock protection.

The warehouse itself boasts a practical layout featuring a tidy reception area, essential kitchenette facilities, and two modern bathrooms for convenience. Additionally, the unit includes three dedicated offices ideal for administrative tasks, complemented by a spacious and adaptable warehouse area designed to accommodate various operational needs. A standout feature of this

## Features

**Zoning** Industrial

### Interior

Floor Loading Cap. 1 Tn/m<sup>2</sup>  
 Air Conditioning Yes  
 Power 3 Phase Yes  
 Power Amps 60

### Exterior

Security Yes  
 Open Parking Bays 4

### Sizes

Floor Size 301m<sup>2</sup>

### Extras

24 Hour Access 24 Hour Response Toilet Guest Toilet

