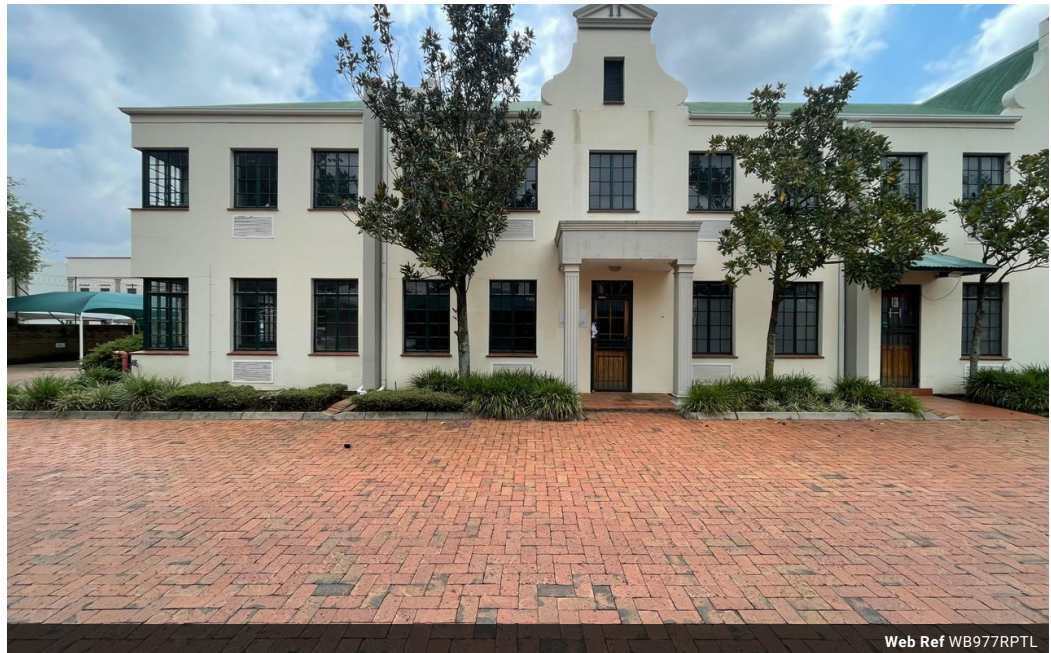




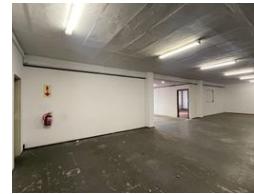
Warrick Botha
 0849752023
warrick@newpointproperty.co.za

Contact Head Office
 010 0354431

Office 40A
 Eden Meadows Complex
 1 Van Riebeeck Avenue
 Greenstone
 1609



Web Ref WB977RPTL



R48,850 pm

Gross Monthly Rental R48,850 Excl. VAT Monthly Rates R1 Excl. VAT

0 12

977m² Industrial Unit Available To Let in Randjespark, Midrand

This 977m² industrial warehouse in Randjespark, Midrand, offers a well-designed space for businesses needing both office and warehouse functionality. The warehouse area provides ample space for storage, distribution, or light manufacturing, supported by three-phase power to accommodate industrial machinery. A high roller shutter door allows for seamless loading and unloading, ensuring efficient logistics and workflow.

The office component is designed to support administrative functions, creating a balanced environment for both operational and managerial needs. The property is strategically located in Randjespark, offering excellent connectivity to major highways and transport routes. With a practical layout and essential features, this industrial unit is well-suited for businesses looking for a secure

Features

Zoning Industrial

Interior

Floor Loading Cap. 1 Tn/m²
 Power 3 Phase Yes
 Power Amps 80

Exterior

Security Yes
 Open Parking Bays 12

Sizes

Floor Size 977m²
 Land Size 5,000m²

Extras

Guard Guard House Office Warehouse

