



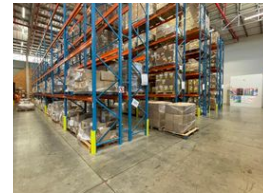
**Warrick Botha**  
 0849752023  
[warrick@newpointproperty.co.za](mailto:warrick@newpointproperty.co.za)

Contact Head Office  
 010 0354431

Office 40A  
 Eden Meadows Complex  
 1 Van Riebeeck Avenue  
 Greenstone  
 1609



Web Ref WB1818RPTL



R174,528 pm

**Gross Monthly Rental** R174,528 Excl. VAT    **Monthly Levy** R1 Excl. VAT  
**Monthly Rates** R10 Excl. VAT

0    52

## 1 818m<sup>2</sup> Industrial Warehouse Available To Let in Randjespark, Midrand

This 1,818m<sup>2</sup> industrial warehouse in Randjespark, Midrand, is a well-equipped facility designed for efficient industrial operations. The warehouse offers excellent height, with 8 meters to the underside of the eaves, making it ideal for storage, distribution, or manufacturing. It features a full sprinkler system with backup water supply, ensuring compliance with fire safety regulations and uninterrupted operations. The property is fitted with three-phase power, providing ample electricity capacity for various industrial applications. Access is seamless with two dock levellers and an on-grade roller door, facilitating smooth loading and offloading of goods.

The warehouse is complemented by a well-appointed office space, creating a functional environment for administrative and

## Features

**Zoning** Industrial

### Interior

Floor Loading Cap. 1 Tn/m<sup>2</sup>  
 Air Conditioning Yes  
 Power 3 Phase Yes  
 Power Amps 125

### Exterior

Security Yes  
 Open Parking Bays 52

### Sizes

Floor Size 1,818m<sup>2</sup>  
 Land Size 5,500m<sup>2</sup>

### Extras

24 Hour Response Air Conditioner Air Conditioning Unit Guard Guard House Balcony Boomed Area

