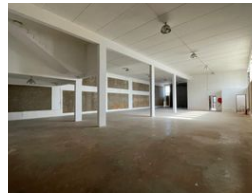
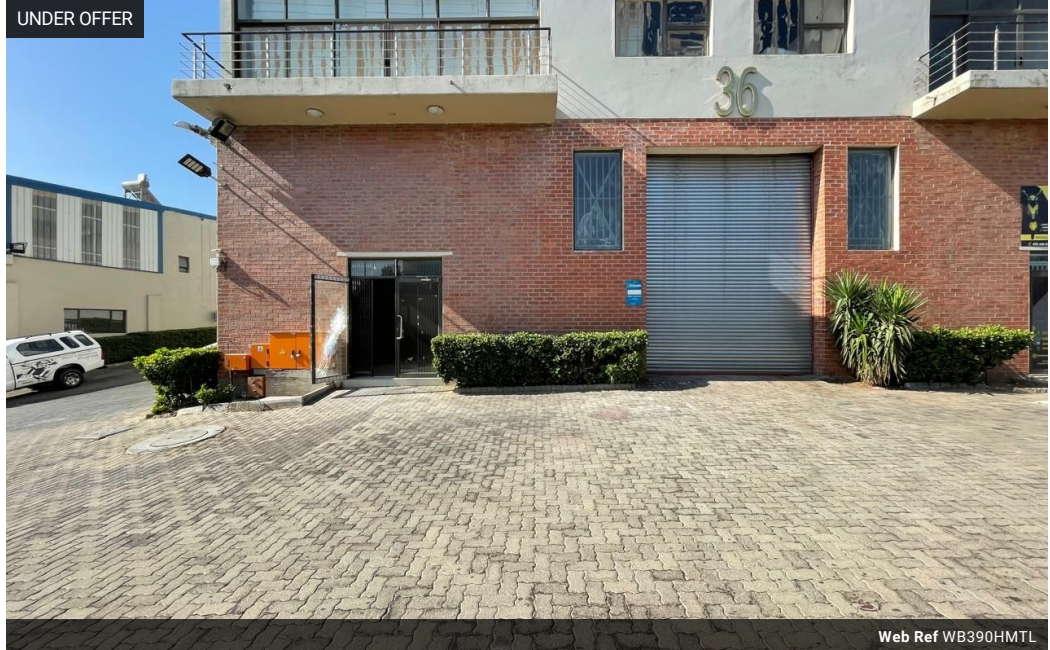




**Warrick Botha**  
 0849752023  
[warrick@newpointproperty.co.za](mailto:warrick@newpointproperty.co.za)

Contact Head Office  
 010 0354431

Office 40A  
 Eden Meadows Complex  
 1 Van Riebeeck Avenue  
 Greenstone  
 1609



Web Ref WB390HTML

**R23,400 pm**

Gross Monthly Rental R23,400 Excl. VAT

0 2

### 390m<sup>2</sup> Industrial Unit To Let in Halfway House, Midrand

This 390-square-meter industrial unit in Halfway House, Midrand, provides a functional and well-organized space suited for a variety of business operations. The unit features a spacious warehouse area, easily accessible through a large roller shutter door, making it ideal for logistics, storage, or light manufacturing activities. Equipped with three-phase power, the unit is well-suited for operations requiring heavy machinery or significant electrical capacity.

Additionally, the unit includes a small reception area, offering a welcoming space for clients and an efficient point of entry for administrative tasks. Its strategic location in Halfway House, Midrand, ensures excellent connectivity to major transport routes,

### Features

**Zoning** Industrial

#### Interior

Floor Loading Cap. 1 Tn/m<sup>2</sup>  
 Power 3 Phase Yes  
 Power Amps 60

#### Exterior

Security Yes  
 Open Parking Bays 2

#### Sizes

Floor Size 390m<sup>2</sup>  
 Land Size 390m<sup>2</sup>

#### Extras

Guard Guard House Warehouse Ground Floor

