



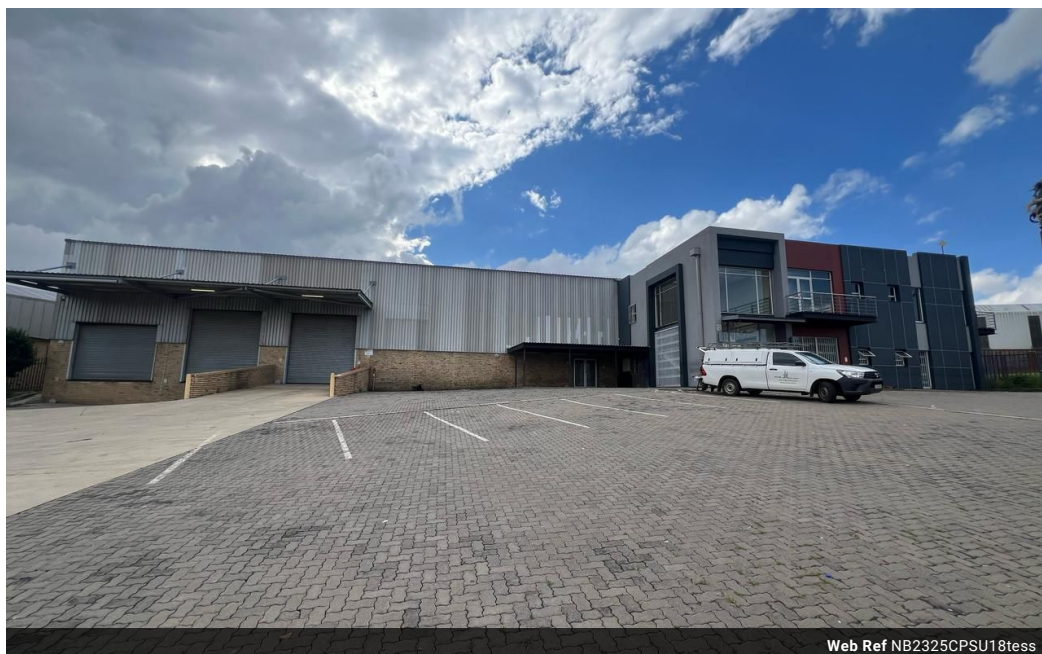
Nathan Broodryk
0844223210
nathan@newpointproperty.co.za

Contact Head Office

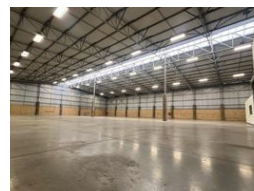
010 0354431

Office 40A
Eden Meadows Complex
1 Van Riebeeck Avenue
Greenstone
1609

2,325m² Warehouse To Let in Corporate Park



Web Ref NB2325CPSU18tess



R162,750 pm

Gross Monthly Rental R162,750 Excl. VAT



2325sqm warehouse located in a safe and secure estate!

This 2,325m² warehouse is located in the prestigious and secure Corporate Park in Midrand, offering an exceptional opportunity for businesses seeking both visibility and security. Positioned with direct access to the N1 highway, the property benefits from high traffic visibility, enhancing brand exposure and accessibility. The site also includes a large 1,000m² yard, providing ample space for easy truck and equipment maneuvering, along with a combination of covered and open parking spaces for staff and visitors.

Inside, the warehouse features a well-planned layout that combines office and industrial spaces. The office area includes private offices, boardrooms, a reception area, and well-maintained restrooms. The spacious, open-plan warehouse floor provides flexibility

Features

Zoning Industrial

Interior

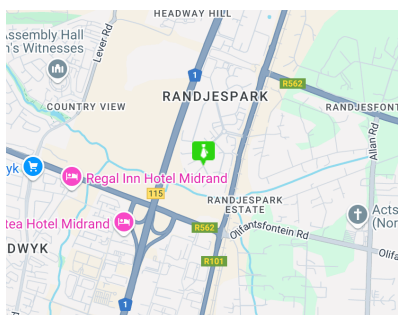
Floor Loading Cap.	1 Tn/m ²
Air Conditioning	Yes
Power 3 Phase	Yes
Power Amps	150

Exterior

Security	Yes
Covered Parking Bays	10
Open Parking Bays	10

Sizes

Floor Size	2,325m ²
Land Size	5,000m ²



<https://www.newpointproperty.co.za>