



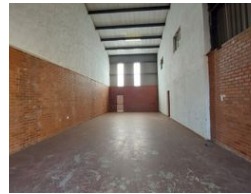
**Nathan Broodryk**  
 0844223210  
 nathan@newpointproperty.co.za

Contact Head Office  
 010 0354431

Office 40A  
 Eden Meadows Complex  
 1 Van Riebeeck Avenue  
 Greenstone  
 1609



Web Ref CL11538



R14,175 pm

Gross Monthly Rental R14,175 Excl. VAT

0 0

189sqm Warehouse available!

This 189 square meter warehouse, situated in a secure park in Clayville, features a balanced layout with a 50/50 split between office and warehouse space. The ground floor includes a welcoming reception area, a bathroom, and a kitchen, while the upper level offers private office rooms for enhanced productivity.

The warehouse has an open-plan design and includes a 5-meter roller door for access to a shared yard. Additionally, a pedestrian

## Features

**Zoning** Industrial

### Interior

Floor Loading Cap. 1 Tn/m<sup>2</sup>  
 Air Conditioning Yes  
 Power 3 Phase Yes  
 Power Amps 60

### Exterior

Security Yes

### Sizes

Floor Size 189m<sup>2</sup>

