



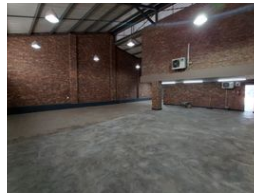
**Nathan Broodryk**  
 0844223210  
 nathan@newpointproperty.co.za

Contact Head Office  
 010 0354431

Office 40A  
 Eden Meadows Complex  
 1 Van Riebeeck Avenue  
 Greenstone  
 1609



Web Ref NB327CVGBP



R25,500 pm

Gross Monthly Rental R25,500 Excl. VAT

0 0

## 327m<sup>2</sup> Warehouse TO LET in Clayville!

The Property is for sale as well.

This cutting-edge warehouse covers an impressive 327 square meters, exemplifying top-tier storage and distribution efficiency. Its spacious design combines functionality with modern office areas, showcasing the future of logistics and adaptability in today's business environment.

Equipped with a robust 60-amp power supply, the facility can accommodate a wide array of equipment and machinery, ensuring smooth operations around the clock. The thoughtfully designed roller doors allow for easy access for trucks of various sizes, facilitating efficient loading and unloading. The exterior features a large yard area for ample maneuverability, along with 10 dedicated parking spaces for easy access for both employees and visitors. This facility represents the ideal fusion of

## Features

**Zoning** Industrial

### Interior

Floor Loading Cap. 10 Tn/m<sup>2</sup>  
 Air Conditioning Yes  
 Power 3 Phase Yes  
 Power Amps 60

### Exterior

Security Yes

### Sizes

Floor Size 327m<sup>2</sup>  
 Land Size 10,000m<sup>2</sup>

