



Marcel Carneiro
 Candidate Property Practitioner
 Registered with PPRA
 (FFC 120 075 3)
 0846932233

marcel@newpointproperty.co.za

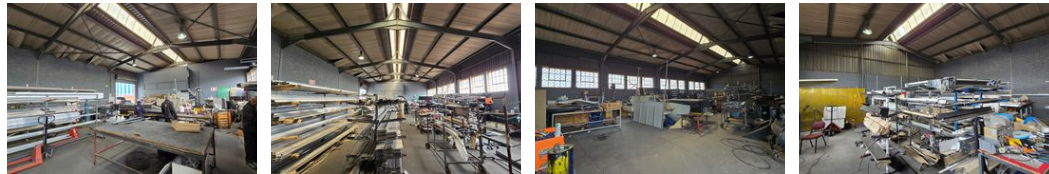
Contact Head Office

010 0354431

Office 40A
 Eden Meadows Complex
 1 Van Riebeeck Avenue
 Greenstone
 1609



Web Ref CL12285



R31,525 pm

Gross Monthly Rental R31,525 Excl. VAT

0 2

486m² Industrial Warehouse to Let in Spartan

This well-maintained 486m² industrial warehouse, located in the highly sought-after Spartan industrial hub, offers an excellent opportunity for businesses seeking a functional and accessible workspace. Featuring good height to the eaves and ample natural light, the warehouse provides an efficient working environment. A large front-facing roller shutter door ensures smooth receiving and dispatch operations, while the property is equipped with 60 amps of three-phase power to support various industrial activities.

The double-story office component includes a welcoming reception area, open-plan office space, kitchen, and male and female ablution facilities. Ample secure parking is available for staff and visitors. Strategically positioned near O.R. Tambo International

Features

Zoning Industrial

Interior

Floor Loading Cap. 1 Tn/m²
 Power 3 Phase Yes
 Power Amps 60

Exterior

Open Parking Bays 2

Sizes

Floor Size 486m²
 Land Size 486m²
 Building Height 6m

