

Brandon Whitehead
 Candidate Property Practitioner
 Registered with PPRA
 (FFC 121 151 9)
 0817743977

brandon@newpointproperty.co.za

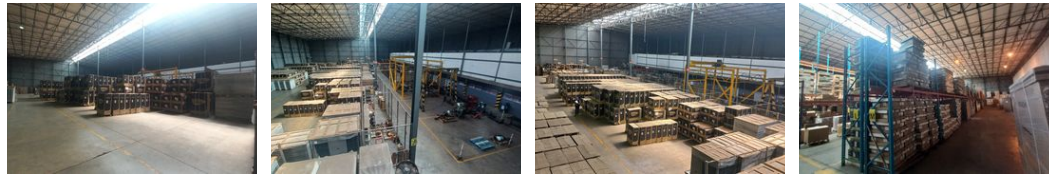
Contact Head Office

010 0354431

Office 40A
 Eden Meadows Complex
 1 Van Riebeeck Avenue
 Greenstone
 1609



Web Ref CL11173



R507,715 pm

Gross Monthly Rental R507,715 Excl. VAT

 30  30

7 811sqm Industrial Warehouse in Isando, Kempton Park

Located in the bustling Isando/Meadowdale area, the A-grade warehouse at 42 Electron Avenue offers a prime leasing opportunity with exceptional visibility along the prominent R24 highway. Situated near OR Tambo International Airport, the property provides easy access to major transport routes, including the R24, N12, and R21 freeways. Spanning a total lettable area of 7,811 square meters, the expansive property includes a large warehouse currently divided into two sections, along with spacious double-story office facilities. The 20,000 square meter stand ensures efficient delivery and dispatch operations, with ample yard space to accommodate logistics needs.

Key features of this stand-alone property include two separate entrances/exits, each equipped with a dedicated security office, and

Features

Zoning Industrial

Interior
 Power 3 Phase Yes

Exterior
 Covered Parking Bays 30
 Open Parking Bays 30

Sizes
 Floor Size 7,811m²
 Land Size 20,000m²
 Building Height 10m

