



Jarred Purchase

Candidate Property Practitioner
Registered with PPRA
(FFC 118 480 9)

0763465458

jarred@newpointproperty.co.za

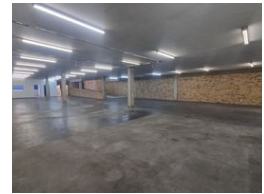
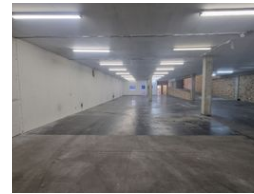
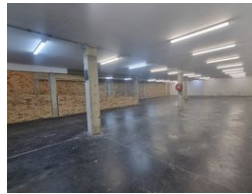
Contact Head Office

010 0354431

Office 40A
Eden Meadows Complex
1 Van Riebeeck Avenue
Greenstone
1609



Web Ref CL11137



R29,696 pm

Gross Monthly Rental R29,696 Excl. VAT

0 6

512sqm Warehouse in a secure business park in Ormonde, Johannesburg

Situated within a secure business park in Ormonde, this well-maintained 512m² warehouse is ideal for storage and distribution. The unit features an on-grade roller shutter door for easy entry into the spacious warehouse, and it is equipped with a three-phase power supply to support smooth operations. Neat staff restrooms and a kitchen add to the space's practicality.

The business park includes a large paved yard, providing excellent access for trucks and links. With 24-hour on-site security, the premises offer a safe working environment. Conveniently located near the main road and the M2 highway, the property ensures

Features

Building Name	Unit 13 Gold Reef Park			Sizes	
Zoning	Industrial			Floor Size	512m ²
Interior		Exterior		Land Size	12,000m ²
Power 3 Phase	Yes	Security	Yes	Building Height	6m
Power Amps	160	Open Parking Bays	6		

