



Robin Mulligan
 Candidate Property Practitioner
 Registered with PPRA
 (FFC 121 152 0)
 0713556301

robin@newpointproperty.co.za

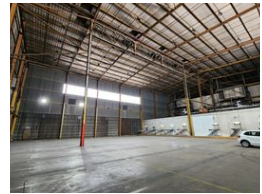
Contact Head Office

010 0354431

Office 40A
 Eden Meadows Complex
 1 Van Riebeeck Avenue
 Greenstone
 1609



Web Ref CL12371



R636,600 pm

Gross Monthly Rental R636,600 Excl. VAT

30 10

12,732m² Power-Packed Warehouse To Let in Heriotdale – Ideal for Large-Scale Operations

This massive 12,732m² freestanding warehouse in Heriotdale, Johannesburg, is designed for heavy-duty industrial use. Situated on a 15,885m² erf with direct access to the M2 highway, it offers seamless truck flow through multiple large roller shutter doors—both on-grade and dock level. The warehouse features impressive height, removable cold storage facilities, and a robust 1,250-amp three-phase power supply supported by a backup generator. A full fire sprinkler system with pumps and tanks ensures maximum safety, making this facility ideal for high-demand operations.

The two-level office component provides a professional and functional workspace, including a modern reception, private offices, boardrooms, and staff amenities such as kitchens, canteens, and showers. Secure covered parking is available for both staff and

Features

Zoning Industrial

Interior

Power 3 Phase Yes
 Power Amps 1250

Exterior

Covered Parking Bays 30
 Open Parking Bays 10

Sizes

Floor Size 12,732m²
 Land Size 15,885m²
 Building Height 15m

