



**Jarred Purchase**

Candidate Property Practitioner  
Registered with PPRA  
(FFC 118 480 9)

0763465458

jarred@newpointproperty.co.za

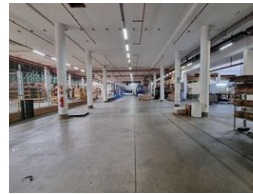
Contact Head Office

010 0354431

Office 40A  
Eden Meadows Complex  
1 Van Riebeeck Avenue  
Greenstone  
1609



Web Ref CL12636



R595,360 pm

Gross Monthly Rental R595,360 Excl. VAT

40 95

Prime 14,884m<sup>2</sup> Industrial Facility on 48,000m<sup>2</sup> Site in City Deep

This exceptional industrial complex in City Deep spans 14,884m<sup>2</sup> on a 48,000m<sup>2</sup> site, offering a highly efficient logistics and distribution hub. The warehouse is fully equipped with a comprehensive sprinkler system, multiple roller shutter doors, dock levelers, and on-grade roller doors, ensuring seamless operations. A large mezzanine level, ample natural light, and a spacious paved yard provide optimal truck maneuverability and efficient workflow.

The A-grade office block features a welcoming reception, private and open-plan offices, boardrooms, and conference rooms, alongside well-maintained restrooms, a kitchen, and a dedicated warehouse canteen. Strategically located near the Johannesburg Market and City Deep Container Terminal, this facility offers unmatched accessibility for logistics and supply chain businesses.

Features

**Zoning** Industrial

**Exterior**

Covered Parking Bays 40  
Open Parking Bays 95

**Sizes**

Floor Size 14,884m<sup>2</sup>  
Land Size 48,000m<sup>2</sup>  
Building Height 10m

