



Robin Mulligan
Candidate Property
Practitioner
Registered with PPRA
(FFC 121 152 0)
0713556301

robin@newpointproperty.co.za

Contact Head Office

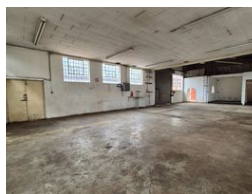
010 0354431

Office 40A
Eden Meadows Complex
1 Van Riebeeck Avenue
Greenstone
1609

203m² Warehouse To Let in Benrose



Web Ref CL12867



R9,052 pm

Gross Monthly Rental R9,052 Excl. VAT

1 6

203m² Warehouse To Let in Benrose – Central Location with Excellent Access

This 203m² warehouse in Benrose is a smart choice for businesses needing a secure, functional, and well-located industrial space. Centrally positioned with easy access to the M2 highway, the property offers great connectivity and convenience, with nearby public transport and retail amenities. The warehouse features good internal height, a large roller shutter door, and 50 amps of 3-phase power, making it ideal for light manufacturing, storage, or distribution.

The office component includes three private offices that overlook the warehouse floor, plus a handy mezzanine level for additional storage. With good truck access for small to medium vehicles and added peace of mind from nightly road closures and regular

Features

Zoning Industrial

Interior

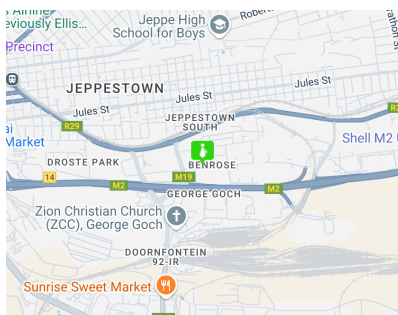
Power 3 Phase	Yes
Power Amps	50

Exterior

Covered Parking Bays	1
Open Parking Bays	6

Sizes

Floor Size	203m²
Land Size	500m²



<https://www.newpointproperty.co.za>