



William Christie
Candidate Property Practitioner
Registered with PPRA
(FFC 121 152 2)
0740552244

william@newpointproperty.co.za

Contact Head Office

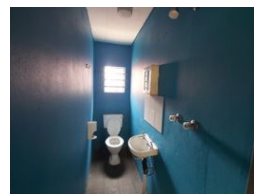
010 0354431

Office 40A
Eden Meadows Complex
1 Van Riebeeck Avenue
Greenstone
1609

237m² Mini Factory To Let in Wadeville



Web Ref 237m2TLWV



R14,200 pm

Gross Monthly Rental R14,200 Excl. VAT
Monthly Rates R1 Excl. VAT

Monthly Levy R1 Excl. VAT



0



0

Modern Mini Factory in Secure Industrial Park – Ideal for Engineering & Fabrication

This compact yet highly functional mini factory is located within a secure industrial park, purpose-built to support efficiency and productivity. The interior is meticulously maintained and thoughtfully designed to streamline workflow, making it a perfect fit for engineering or fabrication businesses.

Inside, you'll find a spacious open-plan factory floor, ideal for maneuvering equipment and machinery with ease. The unit is powered by a reliable 3-phase electrical system, ensuring smooth operation for heavy-duty industrial tasks.

Complementing the production space are two modern, air-conditioned offices—ideal for meetings, admin, or planning. Large windows allow plenty of natural light, fostering a bright and productive working environment.

Features

Zoning Industrial

Interior

Floor Loading Cap. 5 Tn/m²
Power 3 Phase Yes
Power Amps 100

Sizes

Floor Size 237m²
Land Size 237m²
Building Height 7m

