



William Christie
 Candidate Property Practitioner
 Registered with PPRA
 (FFC 121 152 2)
 0740552244

william@newpointproperty.co.za

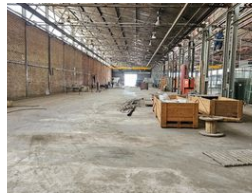
Contact Head Office

010 0354431

Office 40A
 Eden Meadows Complex
 1 Van Riebeeck Avenue
 Greenstone
 1609



Web Ref CL12655



R143,000 pm

Gross Monthly Rental R143,000 Excl. VAT

0 0

High-Powered 3,500m² Factory with Overhead Cranes in Wadeville

This exceptional 3,500m² factory in Wadeville is designed for heavy-duty industrial operations, featuring two 3-ton overhead cranes spanning expansive crane bays—perfect for lifting, fabrication, and manufacturing. The facility offers seamless truck access and maneuverability, ensuring smooth logistics. A dedicated office component provides a professional workspace for administrative functions, creating an efficient and well-integrated business environment.

Equipped with a powerful 800-amp three-phase power supply (subject to an electricity deposit), this facility is ideal for engineering, manufacturing, and large-scale production. Located in the heart of Wadeville's industrial hub, it offers prime connectivity for

Features

Zoning Industrial

Interior

Floor Loading Cap. 10 Tn/m²
 Power 3 Phase Yes
 Power Amps 800

Exterior

Security Yes

Sizes

Floor Size 2,600m²
 Land Size 30,000m²
 Building Height 6m

