



**William Christie**  
 Candidate Property Practitioner  
 Registered with PPRA  
 (FFC 121 152 2)  
 0740552244

[william@newpointproperty.co.za](mailto:william@newpointproperty.co.za)

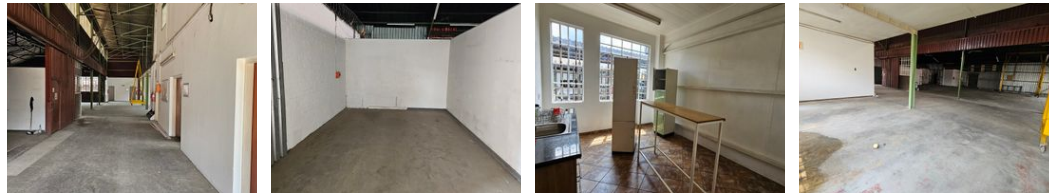
Contact Head Office

010 0354431

Office 40A  
 Eden Meadows Complex  
 1 Van Riebeeck Avenue  
 Greenstone  
 1609



Web Ref WC832TLVW



R39,500 pm

**Gross Monthly Rental** R39,500 Excl. VAT    **Monthly Levy** R2,881 Excl. VAT  
**Monthly Rates** R3,500 Excl. VAT

0    0

## 832m<sup>2</sup> Factory to let in Wadeville

Available for rent, this versatile workshop and office space is located in the well-established industrial hub of Wadeville. The property is designed with functionality in mind, featuring a reception area and a spacious driveway that allows for easy access and maneuvering of trucks for both receiving and dispatching goods. The factory space offers an open-plan layout, providing plenty of flexibility for various types of industrial operations. It benefits from excellent floor space and an abundance of natural light, enhancing the working environment. Additionally, the workshop is equipped with a substantial 125-amp, three-phase electrical supply to meet the demands of heavy machinery and equipment.

### Features

**Zoning** Industrial

**Interior**

Floor Loading Cap. 5 Tn/m<sup>2</sup>  
 Power 3 Phase Yes  
 Power Amps 125

**Exterior**

Security Yes

**Sizes**

Floor Size 832m<sup>2</sup>  
 Land Size 950m<sup>2</sup>  
 Building Height 7m

