



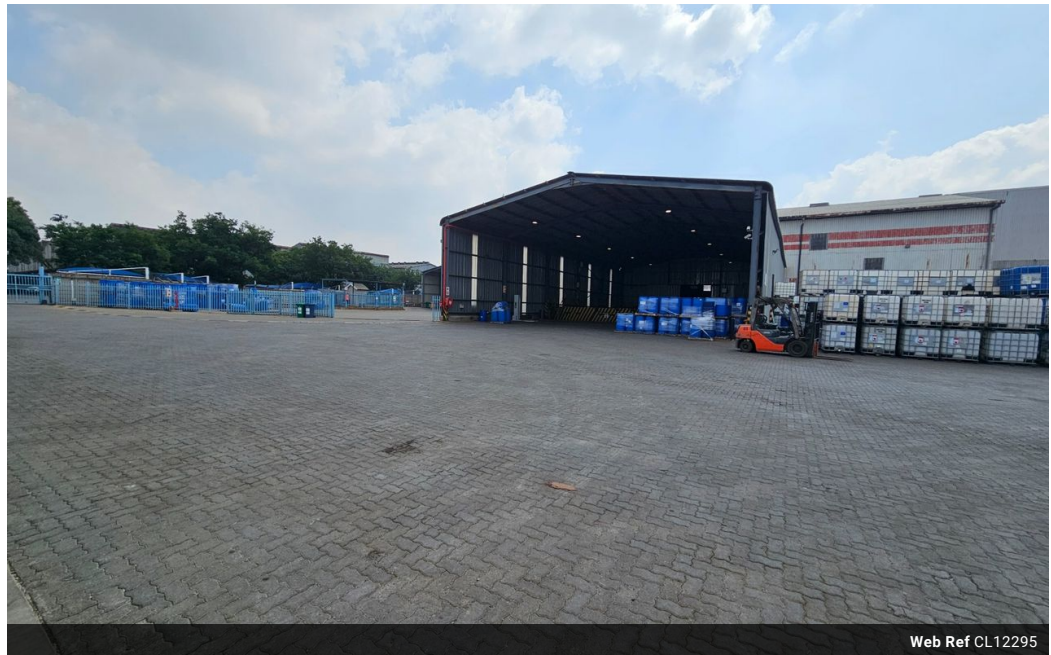
William Christie
 Candidate Property Practitioner
 Registered with PPRA
 (FFC 121 152 2)
 0740552244

william@newpointproperty.co.za

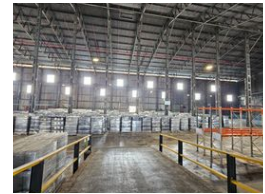
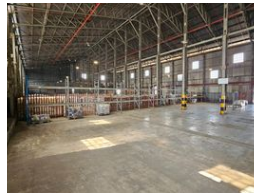
Contact Head Office

010 0354431

Office 40A
 Eden Meadows Complex
 1 Van Riebeeck Avenue
 Greenstone
 1609



Web Ref CL12295



R300,000 pm

Gross Monthly Rental R300,000 Excl. VAT

0 0

4,800m² Industrial Facility on 16,500m² Stand – Ideal for Logistics & Engineering

This expansive industrial property is designed for businesses in logistics, engineering, and fabrication. Situated on a massive 16,500m² stand, it features approximately 4,800m² of versatile indoor space with an impressive roof height, ensuring maximum operational efficiency. A fully functional sprinkler system is in place, while multiple roller shutter doors provide seamless truck access, making it ideal for large-scale operations.

Additional features include a dedicated wash bay for larger vehicles and multiple loading areas with both on-grade and dock-level roller doors. The property's spacious yard is easily accessible with multiple entry and exit gates, enhancing traffic flow and

Features

Zoning Industrial

Interior

Floor Loading Cap. 5 Tn/m²
 Power 3 Phases Yes

Sizes

Floor Size 4,800m²
 Land Size 16,500m²
 Building Height 1m

