



**Brandon Whitehead**  
 Candidate Property Practitioner  
 Registered with PPRA  
 (FFC 121 151 9)  
 0817743977

[brandon@newpointproperty.co.za](mailto:brandon@newpointproperty.co.za)

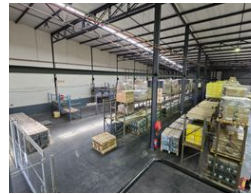
Contact Head Office

010 0354431

Office 40A  
 Eden Meadows Complex  
 1 Van Riebeeck Avenue  
 Greenstone  
 1609



Web Ref BW1570TLTUN1



R117,750 pm

Gross Monthly Rental R117,750 Excl. VAT

6 10

## 1570m<sup>2</sup> industrial warehouse with highway exposure to let in Tunney

Nestled within a secure business park, this industrial property offers 1,570 sqm of well-designed interior space with excellent visibility from the highway. The warehouse features impressive height, optimizing racking solutions and enhancing productivity through ample natural light. With two on-grade roller shutter doors, receiving and dispatching goods is effortless, while a substantial supply of 100 amps of 3-phase power supports various operational needs.

The property also features a shared yard, providing plenty of space for trucks to maneuver and ensuring smooth logistical processes. Two well-appointed office areas complement the industrial space, each designed with reception areas, kitchenettes,

## Features

<b>Building Name</b>	Hilltop				
<b>Zoning</b>	Industrial				
<b>Interior</b>		<b>Exterior</b>		<b>Sizes</b>	
Air Conditioning	Yes	Security	Yes	Floor Size	1,570m <sup>2</sup>
Power 3 Phase	Yes	Covered Parking Bays	6	Land Size	2,000m <sup>2</sup>
Power Amps	100	Open Parking Bays	10	Building Height	9m