



Brandon Whitehead
 Candidate Property Practitioner
 Registered with PPRA (FFC 121 151 9)
 0817743977

brandon@newpointproperty.co.za

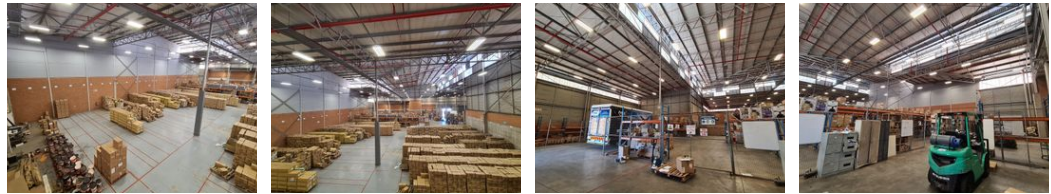
Contact Head Office

010 0354431

Office 40A
 Eden Meadows Complex
 1 Van Riebeeck Avenue
 Greenstone
 1609



Web Ref TL3348BWTUNNEY



R217,620 pm

Gross Monthly Rental R217,620 Excl. VAT

20 18

3 348m² A-grade industrial Warehouse in Tunney, Germiston

Nestled within a secure park in Tunney, Germiston, an exceptional A-grade warehousing facility awaits leasing opportunities. Spanning 3348 square meters, this meticulously maintained property seamlessly integrates spacious warehouse and office areas. Strategically positioned for accessibility, it offers direct access to the N12 highway, enhancing logistical efficiency. The warehouse boasts impressive eaves reaching approximately 12 meters and is safeguarded by comprehensive sprinkler systems, complemented by a loading bay and an on-grade roller shutter door for seamless stock movement.

The generously proportioned warehouse, bathed in natural light, fosters a comfortable and well-illuminated workspace. Across two

Features

Building Name	Unit C Tunney Ridge Business Park		
Zoning	Industrial		
Interior		Exterior	Sizes
Air Conditioning	Yes	Security	Floor Size
Power 3 Phase	Yes	Covered Parking Bays	20
Power Amps	250	Open Parking Bays	18
			Land Size
			5,000m ²
			Building Height
			12m

