



William Christie
 Candidate Property Practitioner
 Registered with PPRRA
 (FFC 121 152 2)
 0740552244

william@newpointproperty.co.za

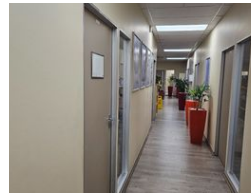
Contact Head Office

010 0354431

Office 40A
 Eden Meadows Complex
 1 Van Riebeeck Avenue
 Greenstone
 1609



Web Ref CL11164



R531,865 pm

Gross Monthly Rental R531,865 Excl. VAT

0 0

9 343sqm Prime Industrial Facility in Roodekop, Germiston

Located in the thriving industrial hub of Roodekop, this exceptional property offers businesses a versatile and well-maintained facility, perfect for a range of industrial activities from large-scale manufacturing to efficient logistics operations. With its pristine condition and strategic design, the property provides an ideal foundation for businesses looking to enhance productivity and operational flow.

A standout feature of the facility is its array of high-capacity cranes, strategically positioned throughout the premises. With lifting capacities ranging from 10 to 16 tons, these cranes are engineered for handling a wide variety of lifting tasks with precision and reliability. Each crane is rigorously load-tested before use, ensuring compliance with strict safety standards and optimal

Features

Zoning Industrial

Interior

Floor Loading Cap. 10 Tn/m²
 Power 3 Phase Yes

Exterior

Security Yes

Sizes

Floor Size 9,343m²
 Land Size 32,000m²
 Building Height 8m

